



Order: (888)-282-5810 (Phone)
(818)-707-0392 (Fax)
order@abiocode.com
Web: www.Abiocode.com

KDM3B (C) Antibody, Rabbit Polyclonal

Cat#: R0911-3

Quantity: 100 ul

Predicted | Observed M.W.: 192 | 200-220 kDa

Lot#: Refer to vial

Application: WB

Uniprot ID: Q7LBC6

Background:

Lysine-specific demethylase 3B (KDM3B) belongs to the JHDM2 histone demethylase family. KDM3B is a Histone demethylase that specifically demethylates 'Lys-9' of histone H3, thereby playing a central role in histone code. KDM3B may have tumor suppressor activity. KDM3B is ubiquitously expressed, with the high expression observed in placenta, skeletal muscle, kidney, heart and liver.

Other Names:

Lysine-specific demethylase 3B, JmjC domain-containing histone demethylation protein 2B, Jumonji domain-containing protein 1B, Nuclear protein 5qNCA, C5orf7, JMJD1B, KIAA1082, NET22, JHDM2B

Source and Purity:

Rabbit polyclonal antibodies were produced by immunizing animals with a GST-fusion protein containing the C-terminal region of human KDM3B. Antibodies were purified by affinity purification using immunogen.

Storage Buffer and Condition:

Supplied in 1 x PBS (pH 7.4), 100 ug/ml BSA, 40% Glycerol, 0.01% NaN₃. Store at -20 °C. Stable for 6 months from date of receipt.

Species Specificity:

Human, Mouse

Tested Applications:

WB: 1:1,000-1:3,000 (detect endogenous protein*)

*: The apparent protein size on WB may be different from the calculated M.W. due to modifications.

Product Data:

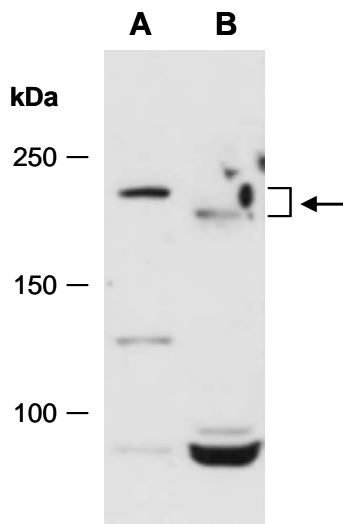


Fig 1. Western blot of total cell extracts from (A) mouse thymus, (B) human HeLa; using anti-KDM3B (C) (R0911-3) at RT for 2 h.