



Order: (888)-282-5810 (Phone)
(818)-707-0392 (Fax)
order@abiocode.com
Web: www.Abiocode.com

BRAF (M) Antibody, Rabbit Polyclonal

Cat#: R1457-2

Quantity: 100 ul

Predicted | Observed M.W.: 84 kDa

Lot#: Refer to vial

Application: WB

Uniprot ID: P15056

Background:

Serine/threonine-protein kinase B-raf (BRAF) belongs to the protein kinase superfamily, the TKL Ser/Thr protein kinase family, and the RAF subfamily. BRAF is involved in the transduction of mitogenic signals from the cell membrane to the nucleus. Additionally, BRAF may play a role in the postsynaptic responses of hippocampal neuron.

Other Names:

Serine/threonine-protein kinase B-raf, Proto-oncogene B-Raf, p94, v-Raf murine sarcoma viral oncogene homolog B1, BRAF1, RAFB1

Source and Purity:

Rabbit polyclonal antibodies were produced by immunizing animals with a GST-fusion protein containing the middle region of human BRAF. Antibodies were purified by affinity purification using immunogen.

Storage Buffer and Condition:

Supplied in 1 x PBS (pH 7.4), 100 ug/ml BSA, 40% Glycerol, 0.01% NaN₃. Store at -20 °C. Stable for 6 months from date of receipt.

Species Specificity:

Human, Mouse

Tested Applications:

WB: 1:1,000-1:3,000 (detect endogenous protein*)

*: The apparent protein size on WB may be different from the calculated M.W. due to modifications.

Product Data:

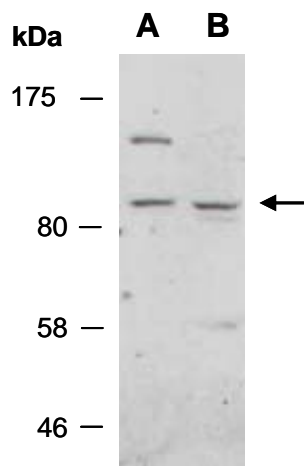


Fig 1. Western blot of total cell extracts from (A) mouse thymus, (B) human HeLa; using anti-BRAF (M) (R1457-2) at RT for 2 h.