



Order: (888)-282-5810 (Phone)  
(818)-707-0392 (Fax)  
[order@abiocode.com](mailto:order@abiocode.com)  
Web: [www.Abiocode.com](http://www.Abiocode.com)

---

## **ELMO1 (N) Antibody, Rabbit Polyclonal**

**Cat#:** R1845-1

**Quantity:** 100 ul

**Predicted | Observed M.W.:** 84 kDa

**Lot#:** Refer to vial

**Application:** WB

**Uniprot ID:** Q92556

### **Background:**

Engulfment and cell motility protein 1 (ELMO1) is involved in cytoskeletal rearrangements required for phagocytosis of apoptotic cells and cell motility. ELMO1 acts in association with DOCK1 and CRK. ELMO1 was initially proposed to be required in complex with DOCK1 to activate Rac Rho small GTPases. Furthermore, ELMO1 may enhance the guanine nucleotide exchange factor (GEF) activity of DOCK1.

### **Other Names:**

Engulfment and cell motility protein 1, Protein ced-12 homolog

### **Source and Purity:**

Rabbit polyclonal antibodies were produced by immunizing animals with a GST-fusion protein containing the N-terminal region of human ELMO1. Antibodies were purified by affinity purification using immunogen.

### **Storage Buffer and Condition:**

Supplied in 1 x PBS (pH 7.4), 100 ug/ml BSA, 40% Glycerol, 0.01% NaN<sub>3</sub>. Store at -20 °C. Stable for 6 months from date of receipt.

### **Species Specificity:**

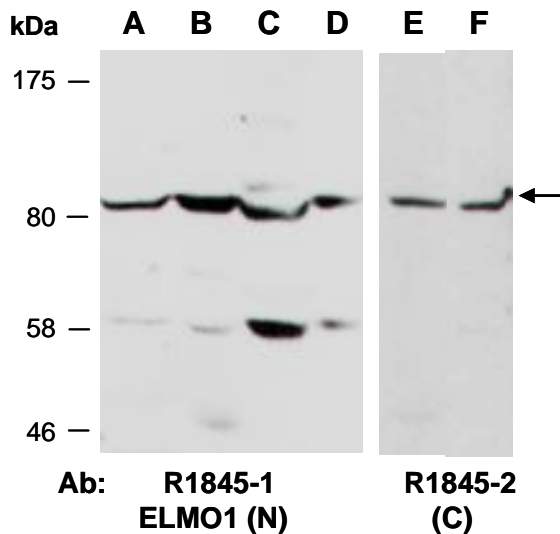
Human, Mouse

### **Tested Applications:**

WB: 1:1,000-1:3,000 (detect endogenous protein\*)

\*: The apparent protein size on WB may be different from the calculated M.W. due to modifications.

**Product Data:**



**Fig 1.** Western blot of total cell extracts from (A) mouse brain, (B, E) mouse thymus, (C) human HeLa, (D, F) human Jurkat; using 2 independent Abs against 2 distinct regions of human ELMO1 at RT for 2 h.