



Order: (888)-282-5810 (Phone)
(818)-707-0392 (Fax)
order@abiocode.com
Web: www.Abiocode.com

SATB2 (N) Antibody, Rabbit Polyclonal

Cat#: R1991-1

Quantity: 100 ul

Predicted | Observed M.W.: 83 | 100 kDa

Lot#: Refer to vial

Application: WB

Uniprot ID: Q9UPW6

Background:

DNA-binding protein SATB2 belongs to the CUT homeobox family. SATB2 binds to DNA, at nuclear matrix- or scaffold-associated regions. Furthermore, SATB2 is thought to recognize the sugar-phosphate structure of double-stranded DNA. SATB2 is a transcription factor controlling nuclear gene expression, by binding to matrix attachment regions (MARs) of DNA and inducing a local chromatin-loop remodeling. Also, SATB2 acts as a docking site for several chromatin remodeling enzymes and also by recruiting corepressors (HDACs) or coactivators (HATs) directly to promoters and enhancers.

Other Names:

DNA-binding protein SATB2, Special AT-rich sequence-binding protein 2

Source and Purity:

Rabbit polyclonal antibodies were produced by immunizing animals with a GST-fusion protein containing the N-terminal region of human SATB2. Antibodies were purified by affinity purification using immunogen.

Storage Buffer and Condition:

Supplied in 1 x PBS (pH 7.4), 100 ug/ml BSA, 40% Glycerol, 0.01% NaN₃. Store at -20 °C. Stable for 6 months from date of receipt.

Species Specificity:

Human

Tested Applications:

WB: 1:1,000-1:3,000 (detect endogenous protein*)

*: The apparent protein size on WB may be different from the calculated M.W. due to modifications.

Product Data:

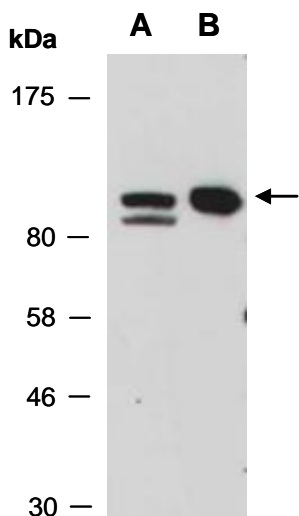


Fig 1. Western blot of total cell extracts from (A) human HeLa, (B) human Jurkat; using anti-SATB2 (N) (R1991-1) at RT for 2 h.