



Order: (888)-282-5810 (Phone)  
(818)-707-0392 (Fax)  
[order@abiocode.com](mailto:order@abiocode.com)  
Web: [www.Abiocode.com](http://www.Abiocode.com)

---

## EIF4E2 (M) Antibody, Rabbit Polyclonal

**Cat#:** R1301-2

**Quantity:** 100 ul

**Predicted | Observed M.W.:** 28 kDa

**Lot#:** Refer to vial

**Application:** WB

**Uniprot ID:** O60573

### Background:

Eukaryotic translation initiation factor 4E type 2 (EIF4E2) belongs to the eukaryotic initiation factor 4E family. EIF4E2 recognizes and binds to the 7-methylguanosine-containing mRNA cap during an early step in the initiation of protein synthesis and facilitates ribosome binding by inducing the unwinding of the mRNAs secondary structures.

### Other Names:

Eukaryotic translation initiation factor 4E type 2, eIF-4E type 2, eIF4E type 2, Eukaryotic translation initiation factor 4E homologous protein, Eukaryotic translation initiation factor 4E-like 3, eIF4E-like protein 4E-LP, mRNA cap-binding protein 4EHP, mRNA cap-binding protein type 3, EIF4EL3, 4EHP, EIF4EL3, IF4e

### Source and Purity:

Rabbit polyclonal antibodies were produced by immunizing animals with a GST-fusion protein containing the middle region of human EIF4E2. Antibodies were purified by affinity purification using immunogen.

### Storage Buffer and Condition:

Supplied in 1 x PBS (pH 7.4), 100 ug/ml BSA, 40% Glycerol, 0.01% NaN<sub>3</sub>. Store at -20 °C. Stable for 6 months from date of receipt.

### Species Specificity:

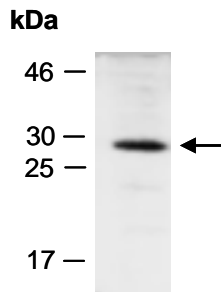
Human

### Tested Applications:

WB: 1:1,000-1:3,000 (detect endogenous protein\*)

\*: The apparent protein size on WB may be different from the calculated M.W. due to modifications.

**Product Data:**



**Fig 1.** Western blot of total cell extracts from human HeLa, using anti- EIF4E2 (M) (R1301-2) at RT for 2 h.