



Order: (888)-282-5810 (Phone)
(818)-707-0392 (Fax)
order@abiocode.com
Web: www.Abiocode.com

PML (C) Antibody, Rabbit Polyclonal

Cat#: R2030-2

Quantity: 100 ul

Predicted | Observed M.W.: 98 | 95 kDa

Lot#: Refer to vial

Application: WB

Uniprot ID: P29590

Background:

Protein PML functions via its association with PML-nuclear bodies (PML-NBs) in a wide range of important cellular processes, including tumor suppression, transcriptional regulation, apoptosis, senescence, DNA damage response, and viral defense mechanisms. PML acts as the scaffold of PML-NBs allowing other proteins to shuttle in and out, a process which is regulated by SUMO-mediated modifications and interactions.

Other Names:

Protein PML, Promyelocytic leukemia protein, RING finger protein 71, Tripartite motif-containing protein 19, MYL, PP8675, RNF71, TRIM19

Source and Purity:

Rabbit polyclonal antibodies were produced by immunizing animals with a GST-fusion protein containing the C-terminal region of human PML. Antibodies were purified by affinity purification using immunogen.

Storage Buffer and Condition:

Supplied in 1 x PBS (pH 7.4), 100 ug/ml BSA, 40% Glycerol, 0.01% NaN₃. Store at -20 °C. Stable for 6 months from date of receipt.

Species Specificity:

Human

Tested Applications:

WB: 1:1,000-1:3,000 (detect endogenous protein*)

*: The apparent protein size on WB may be different from the calculated M.W. due to modifications.

Product Data:

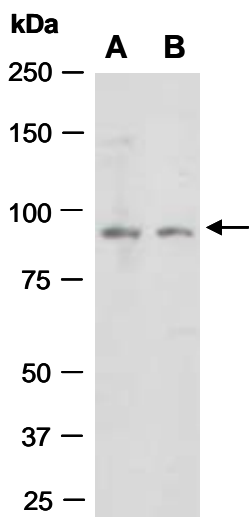


Fig 1. Western blot of total cell extracts from (A) human HeLa, (B) human Jurkat; using anti-PML (C) (R2030-2) at RT for 2 h.