



Order: (888)-282-5810 (Phone)
(818)-707-0392 (Fax)
order@abiocode.com
Web: www.Abiocode.com

MKL1 (C) Antibody, Rabbit Polyclonal

Cat#: R2403-2

Quantity: 100 ul

Predicted | Observed M.W.: 99 | 140 kDa

Lot#: Refer to vial

Application: WB

Uniprot ID: Q969V6

Background:

MKL/myocardin-like protein 1 (MKL1) is a transcriptional coactivator of serum response factor (SRF) with the potential to modulate SRF target genes. MKL1 suppresses TNF-induced cell death by inhibiting activation of caspases; its transcriptional activity is indispensable for the antiapoptotic function. MKL1 may up-regulate antiapoptotic molecules, which in turn inhibit caspase activation.

Other Names:

MKL/myocardin-like protein 1, Megakaryoblastic leukemia 1 protein, Megakaryocytic acute leukemia protein, Myocardin-related transcription factor A, MRTF-A, KIAA1438, MAL

Source and Purity:

Rabbit polyclonal antibodies were produced by immunizing animals with a GST-fusion protein containing the C-terminal region of human MKL1. Antibodies were purified by affinity purification using immunogen.

Storage Buffer and Condition:

Supplied in 1 x PBS (pH 7.4), 100 ug/ml BSA, 40% Glycerol, 0.01% NaN₃. Store at -20 °C. Stable for 6 months from date of receipt.

Species Specificity:

Human

Tested Applications:

WB: 1:1,000-1:3,000 (detect endogenous protein*)

*: The apparent protein size on WB may be different from the calculated M.W. due to modifications.

Product Data:

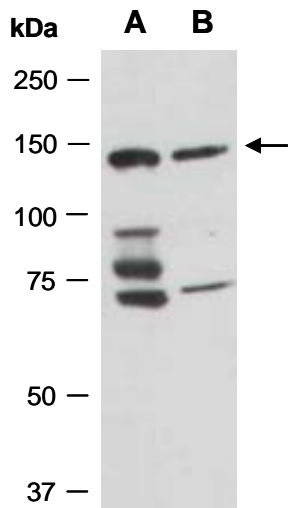


Fig 1. Western blot of total cell extracts from (A) human HeLa, (B) human Jurkat; using anti-MKL1 (C) (R2403-2) at RT for 2 h.