



Order: (888)-282-5810 (Phone)  
(818)-707-0392 (Fax)  
[order@abiocode.com](mailto:order@abiocode.com)  
Web: [www.Abiocode.com](http://www.Abiocode.com)

---

## **FBXW7 (C) Antibody, Rabbit Polyclonal**

**Cat#: R2533-2**

**Quantity: 100 ul**

**Predicted | Observed M.W.: 80 | 110, 69, 66 kDa**

**Lot#: Refer to vial**

**Application: WB**

**Uniprot ID: Q969H0**

### **Background:**

F-box/WD repeat-containing protein 7 (FBXW7) is a substrate recognition component of a SCF (SKP1-CUL1-F-box protein) E3 ubiquitin-protein ligase complex which mediates the ubiquitination and subsequent proteasomal degradation of target proteins. FBXW7 probably recognizes and binds to phosphorylated target proteins. Furthermore, FBXW7 is involved in the degradation of cyclin-E, MYC, NOTCH1 released notch intracellular domain (NICD), and probably PSEN1.

### **Other Names:**

F-box/WD repeat-containing protein 7, Archipelago homolog, hAgo, F-box and WD-40 domain-containing protein 7, F-box protein FBX30, SEL-10, hCdc4, FBW7, FBX30, SEL10

### **Source and Purity:**

Rabbit polyclonal antibodies were produced by immunizing animals with a GST-fusion protein containing the C-terminal region of human FBXW7. Antibodies were purified by affinity purification using immunogen.

### **Storage Buffer and Condition:**

Supplied in 1 x PBS (pH 7.4), 100 ug/ml BSA, 40% Glycerol, 0.01% NaN<sub>3</sub>. Store at -20 °C. Stable for 6 months from date of receipt.

### **Species Specificity:**

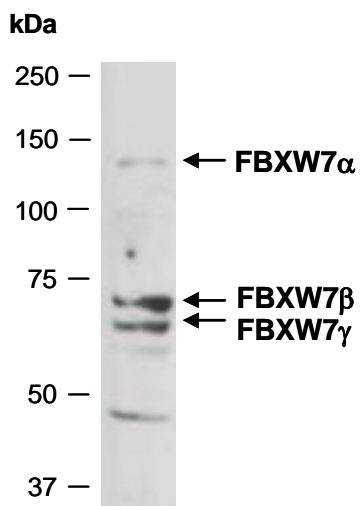
Human

### **Tested Applications:**

WB: 1:1,000-1:3,000 (detect endogenous protein\*)

\*: The apparent protein size on WB may be different from the calculated M.W. due to modifications.

**Product Data:**



**Fig 1.** Western blot of total cell extracts from human HeLa, using anti- FBXW7 (C) (R2533-2) at RT for 2 h. This Ab appears to recognize 3 different isoforms of FBXW7.