



Order: (888)-282-5810 (Phone)  
(818)-707-0392 (Fax)  
[order@abiocode.com](mailto:order@abiocode.com)  
Web: [www.Abiocode.com](http://www.Abiocode.com)

---

## INADL (vPair™) Antibodies

**Cat#:** R1656-vp

**Quantity:** 100 ul

**Predicted | Observed M.W.:** 196 | 210, 180 kDa

**Application:** WB

**Lot#:** Refer to vial

**Application:** WB

**Uniprot ID:** Q8NI35

**Quantity:** 50 ul INADL (N) (R1656-1) Rabbit Polyclonal Antibody &  
50 ul INADL (C) (R1656-2) Rabbit Polyclonal Antibody

### Product Introduction:

vPair™ antibodies represent a pair of fully characterized antibodies that recognize two different regions of a target protein. The product is developed by Abiocode to address whether the signal observed truly represents the protein of interest, an often encountered issue in antibody-based assays. The use of a pair of fully characterized vPair™ antibodies in the same assay can validate signal specificity since vPair™ antibodies recognize two independent epitopes of the same protein. Different sets of vPair™ antibodies are developed at Abiocode to work with specific applications, including antibody arrays, Western blot, IP-Western, ChIP, IHC, and FACS.

### Background:

InaD-like protein (INADL) is a protein with multiple PDZ domains. PDZ domains mediate protein-protein interactions, and proteins with multiple PDZ domains often organize multimeric complexes at the plasma membrane. INADL localizes to tight junctions and to the apical membrane of epithelial cells. A similar protein in *Drosophila* is a scaffolding protein which tethers several members of a multimeric signaling complex in photoreceptors [provided by RefSeq].

### Other Names:

InaD-like protein, Inadl protein, hINADL, Pals1-associated tight junction protein, Protein associated to tight junctions, PATJ, Cipp

### Source and Purity:

Rabbit polyclonal antibodies were produced by immunizing animals with a GST-fusion protein containing either the N-terminal [INADL (N) (R1656-1)] or the C-terminal [INADL (C) (R1656-2)] region of human INADL. Antibodies were purified by affinity purification using immunogen.

### Species Specificity:

Human

---

**For research use only. Not for therapeutic or diagnostic purposes.  
Abiocode, Inc., 29397 Agoura Rd., Ste 106, Agoura Hills, CA 91301**

**Storage Buffer and Condition:**

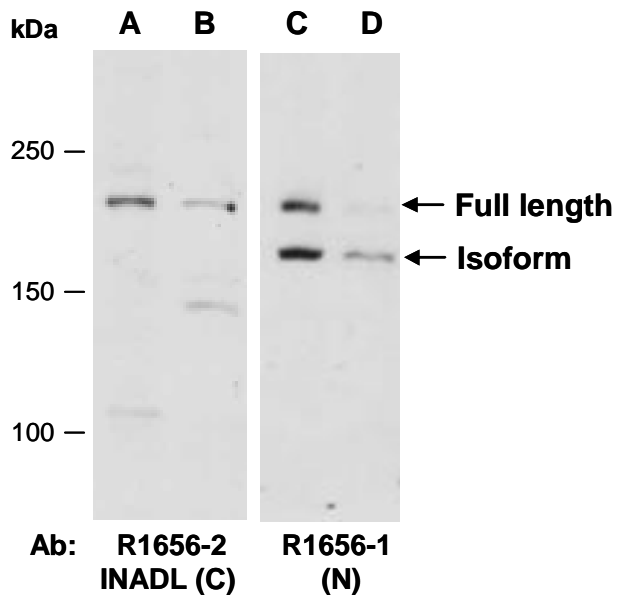
Supplied in 1 x PBS (pH 7.4), 100 ug/ml BSA, 40% Glycerol, 0.01% NaN<sub>3</sub>. Store at -20 °C. Stable for 6 months from date of receipt.

**Tested Applications:**

WB: 1:1,000-1:3,000 (detect endogenous protein\*)

\*: The apparent protein size on WB may be different from the calculated M.W. due to modifications.

**Product Data:**



**Fig 1.** Western blot of total cell extracts from (A, C) human HeLa, (B, D) human Jurkat; using 2 independent Abs against 2 distinct regions of human INADL at RT for 2 h.