



Order: (888)-282-5810 (Phone)
(818)-707-0392 (Fax)
order@abiocode.com
Web: www.Abiocode.com

TJP1 (C) Antibody, Rabbit Polyclonal

Cat#: R1669-2

Quantity: 100 ul

Predicted | Observed M.W.: 195 | 230 kDa

Lot#: Refer to vial

Application: WB

Uniprot ID: Q07157

Background:

Tight junction protein 1 (TJP1) is located on a cytoplasmic membrane surface of intercellular tight junctions. TJP1 may be involved in signal transduction at cell-cell junctions. Two transcript variants encoding distinct isoforms have been identified for TJP1 [provided by RefSeq].

Other Names:

Tight junction protein ZO-1, Tight junction protein 1, Zona occludens protein 1, Zonula occludens protein 1, DKFZp686M05161, MGC133289, ZO-1

Source and Purity:

Rabbit polyclonal antibodies were produced by immunizing animals with a GST-fusion protein containing the C-terminal region of human TJP1. Antibodies were purified by affinity purification using immunogen.

Storage Buffer and Condition:

Supplied in 1 x PBS (pH 7.4), 100 ug/ml BSA, 40% Glycerol, 0.01% NaN₃. Store at -20 °C. Stable for 6 months from date of receipt.

Species Specificity:

Human

Tested Applications:

WB: 1:1,000-1:3,000 (detect endogenous protein*)

*: The apparent protein size on WB may be different from the calculated M.W. due to modifications.

Product Data:

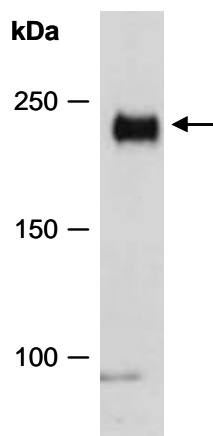


Fig 1. Western blot of total cell extracts from human HeLa, using anti-TJP1 (C) (R1669-2) at RT for 2 h.