



Order: (888)-282-5810 (Phone)  
(818)-707-0392 (Fax)  
[order@abiocode.com](mailto:order@abiocode.com)  
Web: [www.Abiocode.com](http://www.Abiocode.com)

---

## LIN37 (N) Antibody, Rabbit Polyclonal

**Cat#:** R1983-1

**Quantity:** 100 ul

**Predicted | Observed M.W.:** 28 kDa

**Lot#:** Refer to vial

**Application:** WB

**Uniprot ID:** Q96GY3

### Background:

Protein lin-37 homolog (LIN37) is a component of the DREAM complex (also named LINC complex) at least composed of E2F4, E2F5, LIN9, LIN37, LIN52, LIN54, MYBL1, MYBL2, RBL1, RBL2, RBBP4, TFDP1 and TFDP2. The complex exists in quiescent cells where it represses cell cycle-dependent genes. It dissociates in S phase when LIN9, LIN37, LIN52 and LIN54 form a subcomplex that binds to MYBL2.

### Other Names:

Protein lin-37 homolog, Antolefinin, F25965, lin-37, ZK418.4, MSTP064

### Source and Purity:

Rabbit polyclonal antibodies were produced by immunizing animals with a GST-fusion protein containing the N-terminal region of human LIN37. Antibodies were purified by affinity purification using immunogen.

### Storage Buffer and Condition:

Supplied in 1 x PBS (pH 7.4), 100 ug/ml BSA, 40% Glycerol, 0.01% NaN<sub>3</sub>. Store at -20 °C. Stable for 6 months from date of receipt.

### Species Specificity:

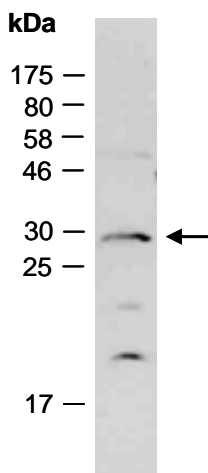
Human, Mouse

### Tested Applications:

WB: 1:1,000-1:3,000 (detect endogenous protein\*)

\*: The apparent protein size on WB may be different from the calculated M.W. due to modifications.

**Product Data:**



**Fig 1.** Western blot of total cell extracts from mouse brain, using anti- LIN37 (N) (R1983-1) at RT for 2 h.