



Order: (888)-282-5810 (Phone)
(818)-707-0392 (Fax)
order@abiocode.com
Web: www.Abiocode.com

COL11A1 (C) Antibody, Rabbit Polyclonal

Cat#: R2581-2

Quantity: 100 ul

Predicted | Observed M.W.: 181 kDa

Lot#: Refer to vial

Application: WB

Uniprot ID: P12107

Background:

Collagen alpha-1(XI) chain (COL11A1) is one of the two alpha chains of type XI collagen, a minor fibrillar collagen. Type XI collagen is a heterotrimer but the third alpha chain is a post-translationally modified alpha 1 type II chain. Mutations in the COL11A1 gene are associated with type II Stickler syndrome and with Marshall syndrome. A single-nucleotide polymorphism in this gene is also associated with susceptibility to lumbar disc herniation. Multiple transcript variants have been identified for COL11A1 [provided by RefSeq].

Other Names:

Collagen alpha-1(XI) chain, COLL6, CO11A1, STL2

Source and Purity:

Rabbit polyclonal antibodies were produced by immunizing animals with a GST-fusion protein containing the C-terminal region of human COL11A1. Antibodies were purified by affinity purification using immunogen.

Storage Buffer and Condition:

Supplied in 1 x PBS (pH 7.4), 100 ug/ml BSA, 40% Glycerol, 0.01% NaN₃. Store at -20 °C. Stable for 6 months from date of receipt.

Species Specificity:

Human

Tested Applications:

WB: 1:1,000-1:3,000 (detect endogenous protein*)

*: The apparent protein size on WB may be different from the calculated M.W. due to modifications.

Product Data:

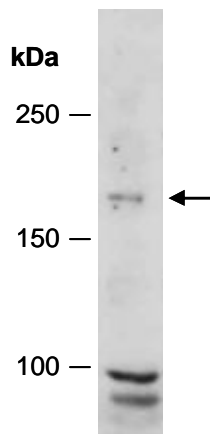


Fig 1. Western blot of total cell extracts from human HeLa, using anti- COL11A1 (C) (R2581-2) at RT for 2 h.