



Order: (888)-282-5810 (Phone)  
(818)-707-0392 (Fax)  
[order@abiocode.com](mailto:order@abiocode.com)  
Web: [www.Abiocode.com](http://www.Abiocode.com)

---

## **RIF1 (N) Antibody, Rabbit Polyclonal**

**Cat#: R1415-1**

**Quantity: 100 ul**

**Predicted | Observed MW: 274 | 300 kDa**

**Lot#: Refer to vial**

**Application: WB**

**Uniprot ID: Q5UIP0**

### **Background:**

Telomere-associated protein RIF1 shares homology with the yeast telomere binding protein, Rap1 interacting factor 1. RIF1 localizes to aberrant telomeres and may be involved in DNA repair. RIF1 is required for checkpoint mediated arrest of cell cycle progression in response to DNA damage during S-phase (the intra-S-phase checkpoint). This checkpoint requires activation of at least 2 parallel pathways by the ATM kinase: one involves the MRN (MRE11A-RAD50-NBS1) complex, while the second requires CHEK2. RIF1 seems to act independently of both pathways. RIF1 seems to play no role in either the G1/S or G2/M DNA damage checkpoints.

### **Other Names:**

Telomere-associated protein RIF1, Rap1-interacting factor 1 homolog

### **Source and Purity:**

Rabbit polyclonal antibodies were produced by immunizing animals with a GST-fusion protein containing the N-terminal region of human RIF1. Antibodies were purified by affinity purification using immunogen.

### **Storage Buffer and Condition:**

Supplied in 1 x PBS (pH 7.4), 100 ug/ml BSA, 40% Glycerol, 0.01% NaN<sub>3</sub>. Store at -20 °C. Stable for 6 months from date of receipt.

### **Species Specificity:**

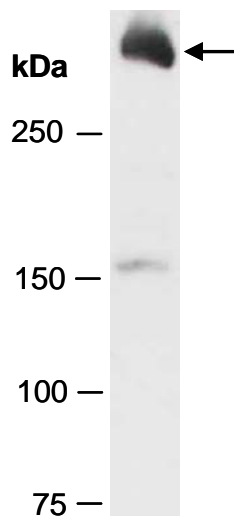
Human

### **Tested Applications:**

WB: 1:1,000-1:3,000 (detect endogenous protein\*)

\*: The apparent protein size on WB may be different from the calculated M.W. due to modifications.

**Product Data:**



**Fig 1.** Western blot of total cell extracts from human Jurkat, using anti-RIF1 (N) (R1415-1) at RT for 2 h.