



Order: (888)-282-5810 (Phone)  
(818)-707-0392 (Fax)  
[order@abiocode.com](mailto:order@abiocode.com)  
Web: [www.Abiocode.com](http://www.Abiocode.com)

---

## **ELL2 (C2) Antibody, Rabbit Polyclonal**

**Cat#: R0211-2**

**Quantity: 100 ul**

**Predicted M.W.: 72 kDa**

**Lot#: Refer to vial**

**Application: WB**

**Uniprot ID: O00472**

### **Background:**

ELL2 belongs to the ELL/occludin family. ELL2 is an elongation factor that can increase the catalytic rate of RNA polymerase II transcription by suppressing transient pausing by the polymerase at multiple sites along the DNA. ELL2 interacts with EAF1 and EAF2.

### **Other Names:**

RNA polymerase II elongation factor ELL2

### **Source and Purity:**

Rabbit polyclonal antibodies were produced by immunizing animals with a GST-fusion protein containing the C-terminal region of human ELL2 [distinct from the antigen for R0211-1, ELL2 (C1) antibody]. Antibodies were purified by affinity purification using immunogen.

### **Storage Buffer and Condition:**

Supplied in 1 x PBS (pH 7.4), 100 ug/ml BSA, 40% Glycerol, 0.01% NaN<sub>3</sub>. Store at -20 °C. Stable for 6 months from date of receipt.

### **Species Specificity:**

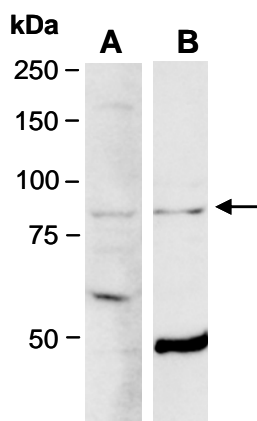
Human, Mouse

### **Tested Applications:**

WB: 1:1,000-1:5,000 (detect endogenous protein\*)

\*: The apparent protein size on WB may be different from the calculated M.W. due to modifications.

**Product Data:**



**Fig 1.** Western blot of total cell extracts from mouse brain, using 2 independent antibodies against 2 distinct C-terminal regions of human ELL2 (A: R0211-1; B: R0211-2) at RT for 2 h. The observed M.W. of ELL2 is approximately 90 kD.