



Order: (888)-282-5810 (Phone)
(818)-707-0392 (Fax)
order@abiocode.com
Web: www.Abiocode.com

KRT14 (vPair™) Antibodies

Cat#: R1795-vp

Lot#: Refer to vial

Predicted I Observed M.W.: 52 I 60, 65 kDa

Uniprot ID: P02533

Application: WB

Quantity: 50 ul KRT14 (C1) (R1795-2) Rabbit Polyclonal Antibody &

50 ul KRT14 (C2) (R1795-3) Rabbit Polyclonal Antibody

Product Introduction:

vPair™ antibodies represent a pair of fully characterized antibodies that recognize two different regions of a target protein. The product is developed by Abiocode to address whether the signal observed truly represents the protein of interest, an often encountered issue in antibody-based assays. The use of a pair of fully characterized vPair™ antibodies in the same assay can validate signal specificity since vPair™ antibodies recognize two independent epitopes of the same protein. Different sets of vPair™ antibodies are developed at Abiocode to work with specific applications, including antibody arrays, Western blot, IP-Western, ChIP, IHC, and FACS.

Background:

Keratin, type I cytoskeletal 14 (KRT14) is a member of the keratin family, the most diverse group of intermediate filaments. This gene product, a type I keratin, is usually found as a heterotetramer with two keratin 5 molecules, a type II keratin. Together they form the cytoskeleton of epithelial cells. Mutations in the genes for these keratins are associated with epidermolysis bullosa simplex. At least one pseudogene has been identified at 17p12-p11 [provided by RefSeq].

Other Names:

Keratin, type I cytoskeletal 14, Cytokeratin-14, CK-14, Keratin-14, K14

Source and Purity:

Rabbit polyclonal antibodies were produced by immunizing animals with GST-fusion proteins containing 2 distinct C-terminal regions of human KRT14. Antibodies were purified by affinity purification using immunogen.

Storage Buffer and Condition:

Supplied in 1 x PBS (pH 7.4), 100 ug/ml BSA, 40% Glycerol, 0.01% NaN₃. Store at -20 °C. Stable for 6 months from date of receipt.

For research use only. Not for therapeutic or diagnostic purposes.
Abiocode, Inc., 29397 Agoura Rd., Ste 106, Agoura Hills, CA 91301

Species Specificity:

Human, Mouse

Tested Applications:

WB: 1:1,000-1:3,000 (detect endogenous protein*)

*: The apparent protein size on WB may be different from the calculated M.W. due to modifications.

Product Data:

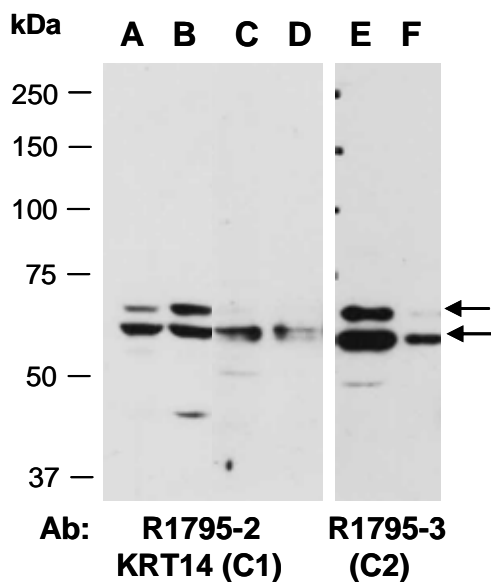


Fig 1. Western blot of total cell extracts from (A) human HeLa, (B) human Jurkat, (C, E) mouse brain, (D, F) mouse thymus; using 2 independent Abs against 2 distinct regions of human KRT14 at RT for 2 h.