



Order: (888)-282-5810 (Phone)  
(818)-707-0392 (Fax)  
[order@abiocode.com](mailto:order@abiocode.com)  
Web: [www.Abiocode.com](http://www.Abiocode.com)

---

## ASXL1 (C) Antibody, Rabbit Polyclonal

**Cat#: R2690-2**

**Quantity: 100 ul**

**Predicted | Observed M.W.: 165 | 220 kDa**

**Lot#: Refer to vial**

**Application: WB, IP**

**Uniprot ID: Q8IXJ9**

### **Background:**

Additional sex combs-like protein 1 (ASXL1) is similar to the Drosophila additional sex combs protein, which is a chromatin-binding protein required for normal determination of segment identity in the developing embryo. ASXL1 is a member of the Polycomb group of proteins, which are necessary for the maintenance of stable repression of homeotic and other loci. ASXL1 is thought to disrupt chromatin in localized areas, enhancing transcription of certain genes while repressing the transcription of other genes. ASXL1 functions as a ligand-dependent co-activator for retinoic acid receptor in cooperation with nuclear receptor coactivator 1. Mutations in the ASXL1 gene are associated with myelodysplastic syndromes and chronic myelomonocytic leukemia. Alternative splicing results in multiple transcript variants of ASXL1 [provided by RefSeq].

### **Other Names:**

Putative Polycomb group protein ASXL1, Additional sex combs-like protein 1, KIAA0978

### **Source and Purity:**

Rabbit polyclonal antibodies were produced by immunizing animals with a GST-fusion protein containing the C-terminal region of human ASXL1. Antibodies were purified by affinity purification using immunogen.

### **Storage Buffer and Condition:**

Supplied in 1 x PBS (pH 7.4), 100 ug/ml BSA, 40% Glycerol, 0.01% NaN<sub>3</sub>. Store at -20 °C. Stable for 6 months from date of receipt.

### **Species Specificity:**

Human

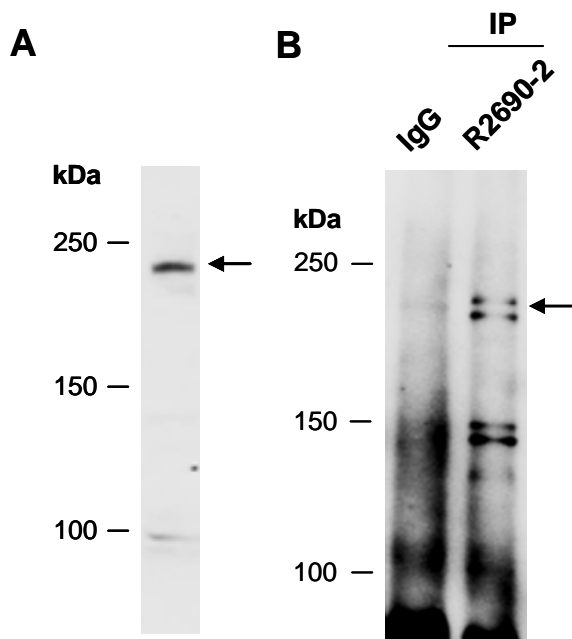
### **Tested Applications:**

WB: 1:1,000-1:3,000 (detect endogenous protein\*)

IP: 1:100-1:200

\*: The apparent protein size on WB may be different from the calculated M.W. due to modifications.

**Product Data:**



**Fig 1. (A)** Western blot of total cell extracts from human HeLa; using anti-ASXL1 (C) (R2690-2) at RT for 2 h. **(B)** Total extracts from human HeLa were immunoprecipitated (IP) with IgG or anti-ASXL1 (C) (R2690-2); followed by WB with the same Ab.