



Order: (888)-282-5810 (Phone)
(818)-707-0392 (Fax)
order@abiocode.com
Web: www.Abiocode.com

LGR6 (N3) Antibody, Rabbit Polyclonal

Cat#: R2027-6

Quantity: 100 ul

Predicted | Observed MW: 104 kDa

Lot#: Refer to vial

Application: WB

Uniprot ID: Q9HBX8

Background:

Leucine-rich repeat-containing G-protein coupled receptor 6 (LGR6) is a member of the leucine-rich repeat-containing subgroup of the G protein-coupled 7-transmembrane protein superfamily. LGR6 is a glycoprotein hormone receptor with a large N-terminal extracellular domain that contains leucine-rich repeats important for the formation of a horseshoe-shaped interaction motif for ligand binding. Alternative splicing of this gene results in multiple transcript variants [provided by RefSeq].

Other Names:

Leucine-rich repeat-containing G-protein coupled receptor 6, FLJ14471, UNQ6427/PRO21331, VTS20631

Source and Purity:

Rabbit polyclonal antibodies were produced by immunizing animals with a GST-fusion protein containing the N-terminal region of human LGR6. Antibodies were purified by affinity purification using immunogen.

Storage Buffer and Condition:

Supplied in 1 x PBS (pH 7.4), 100 ug/ml BSA, 40% Glycerol, 0.01% NaN₃. Store at -20 °C. Stable for 6 months from date of receipt.

Species Specificity:

Human

Tested Applications:

WB: 1:1,000-1:3,000 (detect endogenous protein*)

*: The apparent protein size on WB may be different from the calculated M.W. due to modifications.

Product Data:

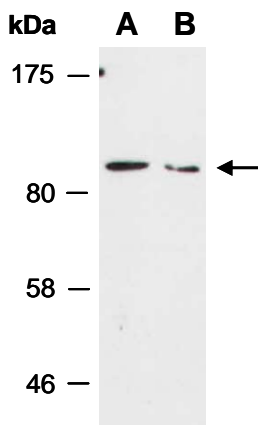


Fig 1. Western blot of total cell extracts from (A) human HeLa, (B) human Jurkat; using anti-LGR6 (N3) (R2027-6) at RT for 2 h.