



Order: (888)-282-5810 (Phone)
(818)-707-0392 (Fax)
order@abiocode.com
Web: www.Abiocode.com

CDF1 (N2) Antibody, Rabbit Polyclonal

Cat#: R1250-2

Quantity: 100 ul

Predicted | Observed M.W.: 29 kDa

Lot#: Refer to vial

Application: WB

Uniprot ID: Q9FN50

Background:

Cell growth defect factor 1(CDF1) causes Bax mediated lethality in yeast by generating reactive oxygen species and this effect is suppressed by AtBI-1.

Other Names:

AtCDF1, Cell growth defect factor 1, At5g23040/MYJ24_3, Emb|CAB62636.1

Source and Purity:

Rabbit polyclonal antibodies were produced by immunizing animals with a GST-fusion protein containing the N-terminal region of *arabidopsis thaliana* CDF1 (At5g23040). Antibodies were purified by affinity purification using immunogen.

Storage Buffer and Condition:

Supplied in 1 x PBS (pH 7.4), 100 ug/ml BSA, 40% Glycerol, 0.01% NaN₃. Store at -20 °C. Stable for 6 months from date of receipt.

Species Specificity:

Arabidopsis thaliana

Tested Applications:

WB: 1:1,000-1:3,000 (detect endogenous protein*)

*: The apparent protein size on WB may be different from the calculated M.W. due to modifications.

Product Data:

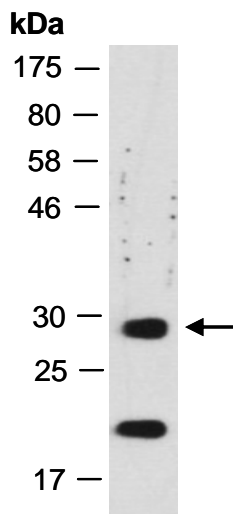


Fig 1. Western blot of total cell extracts from *Arabidopsis thaliana*; using anti-CDF1 (N2) (R1250-2) at RT for 2 h.