



Order: (888)-282-5810 (Phone)
(818)-707-0392 (Fax)
order@abiocode.com
Web: www.Abiocode.com

SIGD (C1) Antibody, Rabbit Polyclonal

Cat#: R2139-2

Quantity: 100 ul

Predicted | Observed M.W.: 47 kDa

Lot#: Refer to vial

Application: WB

Uniprot ID: Q9ZSL6

Background:

Sigma factors are initiation factors that promote the attachment of plastid-encoded RNA polymerase (PEP) to specific initiation sites and are then released. RNA polymerase sigma factor sigD (SIGD) regulates transcription of the *ndhF* gene which codes for a subunit of the plastid NDH [NAD(P)H dehydrogenase] complex.

Other Names:

RNA polymerase sigma factor sigD, chloroplastic, Sigma factor D, Sigma-D, RNA polymerase sigma factor sig4, Atsig4, Sigma factor 4, SIG4

Source and Purity:

Rabbit polyclonal antibodies were produced by immunizing animals with a GST-fusion protein containing the C-terminal region of *arabidopsis thaliana* SIGD (At5g13730). Antibodies were purified by affinity purification using immunogen.

Storage Buffer and Condition:

Supplied in 1 x PBS (pH 7.4), 100 ug/ml BSA, 40% Glycerol, 0.01% NaN₃. Store at -20 °C. Stable for 6 months from date of receipt.

Species Specificity:

Arabidopsis thaliana

Tested Applications:

WB: 1:1,000-1:3,000 (detect endogenous protein*)

*: The apparent protein size on WB may be different from the calculated M.W. due to modifications.

Product Data:

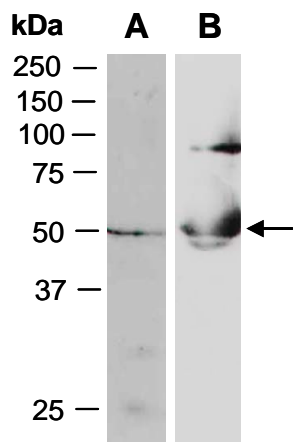


Fig 1. Western blot of total cell extracts from *Arabidopsis thaliana*; using (A) anti-SIGD (C1) (R2139-2), (B) anti-SIGD (C2) (R2139-3) at RT for 2 h.