



Order: (888)-282-5810 (Phone)  
(818)-707-0392 (Fax)  
[order@abiocode.com](mailto:order@abiocode.com)  
Web: [www.Abiocode.com](http://www.Abiocode.com)

---

## **SIGD (C2) Antibody, Rabbit Polyclonal**

**Cat#: R2139-3**

**Quantity: 100 ul**

**Predicted | Observed M.W.: 47 kDa**

**Lot#: Refer to vial**

**Application: WB**

**Uniprot ID: Q9ZSL6**

### **Background:**

Sigma factors are initiation factors that promote the attachment of plastid-encoded RNA polymerase (PEP) to specific initiation sites and are then released. RNA polymerase sigma factor sigD (SIGD) regulates transcription of the *ndhF* gene which codes for a subunit of the plastid NDH [NAD(P)H dehydrogenase] complex.

### **Other Names:**

RNA polymerase sigma factor sigD, chloroplastic, Sigma factor D, Sigma-D, RNA polymerase sigma factor sig4, Atsig4, Sigma factor 4, SIG4

### **Source and Purity:**

Rabbit polyclonal antibodies were produced by immunizing animals with a GST-fusion protein containing the C-terminal region of *arabidopsis thaliana* SIGD (At5g13730). Antibodies were purified by affinity purification using immunogen.

### **Storage Buffer and Condition:**

Supplied in 1 x PBS (pH 7.4), 100 ug/ml BSA, 40% Glycerol, 0.01% NaN<sub>3</sub>. Store at -20 °C. Stable for 6 months from date of receipt.

### **Species Specificity:**

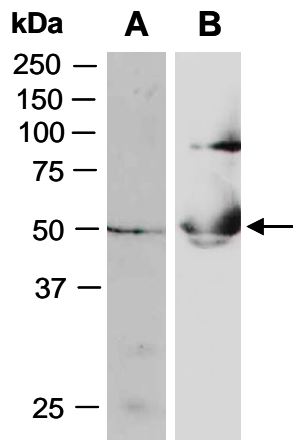
*Arabidopsis thaliana*

### **Tested Applications:**

WB: 1:1,000-1:3,000 (detect endogenous protein\*)

\*: The apparent protein size on WB may be different from the calculated M.W. due to modifications.

**Product Data:**



**Fig 1.** Western blot of total cell extracts from *Arabidopsis thaliana*; using (A) anti-SIGD (C1) (R2139-2), (B) anti-SIGD (C2) (R2139-3) at RT for 2 h.