



Order: (888)-282-5810 (Phone)
(818)-707-0392 (Fax)
order@abiocode.com
Web: www.Abiocode.com

CHR40 (vPair™) Antibodies

Cat#: R2156-vp

Lot#: Refer to vial

Predicted | Observed M.W.: 128 kDa

Uniprot ID: Q9LK10

Application: WB

Quantity: 50 ul CHR40 (M) (R2156-2b) Rabbit Polyclonal Antibody
50 ul CHR40 (C) (R2156-3) Rabbit Polyclonal Antibody

Product Introduction:

vPair™ antibodies represent a pair of fully characterized antibodies that recognize two different regions of a target protein. The product is developed by Abiocode to address whether the signal observed truly represents the protein of interest, an often encountered issue in antibody-based assays. The use of a pair of fully characterized vPair™ antibodies in the same assay can validate signal specificity since vPair™ antibodies recognize two independent epitopes of the same protein. Different sets of vPair™ antibodies are developed at Abiocode to work with specific applications, including antibody arrays, Western blot, IP-Western, ChIP, IHC, and FACS.

Background:

Chromatin remodeling 40 (CHR40) is a nuclear protein that possesses helicase activity. CHR40 has been implicated in DNA binding, ATP binding, and nucleic acid binding. CHR40 may be involved in cell-cell signaling, histone lysine methylation, production of miRNAs involved in gene silencing by miRNA, production of ta-siRNAs involved in RNA interference, regulation of flower development, and virus induced gene silencing.

Other Names:

Chromatin remodeling 40, Genomic DNA, chromosome 3, TAC clone: K7M2

Source and Purity:

Rabbit polyclonal antibodies were produced by immunizing animals with GST-fusion proteins containing either the middle [CHR40 (M) (R2156-2b)] or the C-terminal [CHR40 (C) (R2156-3)] region of *arabidopsis thaliana* CHR40 (At3g24340). Antibodies were purified by affinity purification using immunogen.

Storage Buffer and Condition:

Supplied in 1 x PBS (pH 7.4), 100 ug/ml BSA, 40% Glycerol, 0.01% NaN₃. Store at -20 °C. Stable for 6 months from date of receipt.

For research use only. Not for therapeutic or diagnostic purposes.
Abiocode, Inc., 29397 Agoura Rd., Ste 106, Agoura Hills, CA 91301

Species Specificity:

Arabidopsis thaliana

Tested Applications:

WB: 1:1,000-1:3,000 (detect endogenous protein*)

*: The apparent protein size on WB may be different from the calculated M.W. due to modifications.

Product Data:

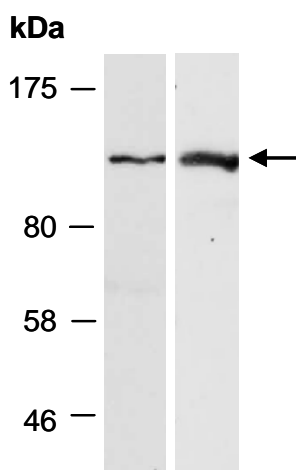


Fig 1. Western blot of total cell extracts from *arabidopsis thaliana*; using (A) anti-CHR40 (M) (R2156-2b), (B) anti-CHR40 (C) (R2156-3) at RT for 2 h.