



Order: (888)- 282-5810 (Phone)  
(818)-707-0392 (Fax)  
[order@abiocode.com](mailto:order@abiocode.com)  
Web: [www.Abiocode.com](http://www.Abiocode.com)

---

## His-Tag Antibody, Mouse Monoclonal

**Cat#: M0335-1**

**Quantity: 100 ug**

**Isotype: Mouse IgG1**

**Lot#: Refer to vial**

**Application: WB**

**Clone: 5G9**

### Background:

Epitope tags are useful for the labeling and detection of proteins using immunoblotting, immunoprecipitation, and immunostaining techniques. Because of their small size, they are unlikely to affect the tagged protein's biochemical properties. His-Tag (6xHis) is one such epitope tag that is widely used in the research field. The His-Tag on the expressed recombinant proteins also allows for efficient coupling to Ni<sup>2+</sup> affinity resins and purification by a single step chromatography.

### Other Names:

Histidine Tag, His tag

### Source and Purity:

Mouse monoclonal antibodies were produced by immunizing animals with a GST fusion protein containing a polyhistidine amino acid sequence. Antibodies were purified by Caprylic Acid-Ammonium Sulfate precipitation.

### Storage Buffer and Condition:

Supplied in 1 x PBS (pH 7.4), 40% Glycerol, 0.02% Thimerosal. Store at -20 °C. Stable for 6 months from date of receipt.

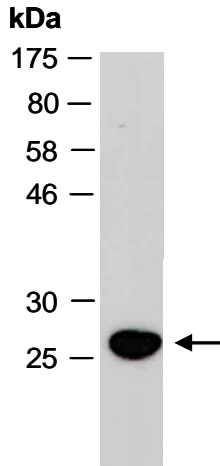
### Species Specificity:

This anti-His-Tag antibody recognizes His-Tag containing proteins.

### Tested Applications:

WB: 1:1,000-1:3,000

**Product Data:**



**Fig 1.** Western blot was performed with a His-tagged recombinant protein (4 ng); using monoclonal anti-His (M0335-1) at RT for 2 h.