



Order: (888)-282-5810 (Phone)
(818)-707-0392 (Fax)
order@abiocode.com
Web: www.Abiocode.com

TET2 Antibody Sampler Kit

Cat#: R1086-K1a

Predicted M.W.: 224 kDa

Uniprot ID: Q6N021 (human) & Q4JK59 (mouse)

Quantity:

Lot#: Refer to vial

Application: WB

20 ul TET2 (N1) (R1086-1) Rabbit Polyclonal Antibody
20 ul TET2 (C1) (R1086-3) Rabbit Polyclonal Antibody
20 ul TET2 (N2) (R1086-4) Rabbit Polyclonal Antibody
20 ul TET2 (M) (R1086-5) Rabbit Polyclonal Antibody
20 ul TET2 (C2) (R1086-6b) Rabbit Polyclonal Antibody

Background:

TET2 is a methylcytosine dioxygenase that catalyzes the conversion of methylcytosine (5mC) to 5-hydroxymethylcytosine (5hmC). 5-hydroxymethylcytosine may influence chromatin structure and recruit specific factors or may constitute an intermediate component in cytosine demethylation. TET2 plays an important role in myelopoiesis, and defects in TET2 gene have been associated with several myeloproliferative disorders.

Other Names:

Methylcytosine dioxygenase TET2, KIAA1546

Source and Purity:

Rabbit polyclonal antibodies were produced by immunizing animals with GST-fusion proteins containing the various regions of human (R1086-1 and R1086-3) or mouse (R1086-4, R1086-5, R1086-6b) TET2 as indicated in Figure 1 (see below). Antibodies were purified by affinity purification using immunogen.

Storage Buffer and Condition:

Supplied in 1 x PBS (pH 7.4), 100 ug/ml BSA, 40% Glycerol, 0.01% NaN₃. Store at -20 °C. Stable for 6 months from date of receipt.

Species Specificity:

Human, Mouse

Tested Applications:

WB: 1:1,000-1:3,000 (detect endogenous protein*)

*: The apparent protein size on WB may be different from the calculated M.W. due to modifications.

Product Data:

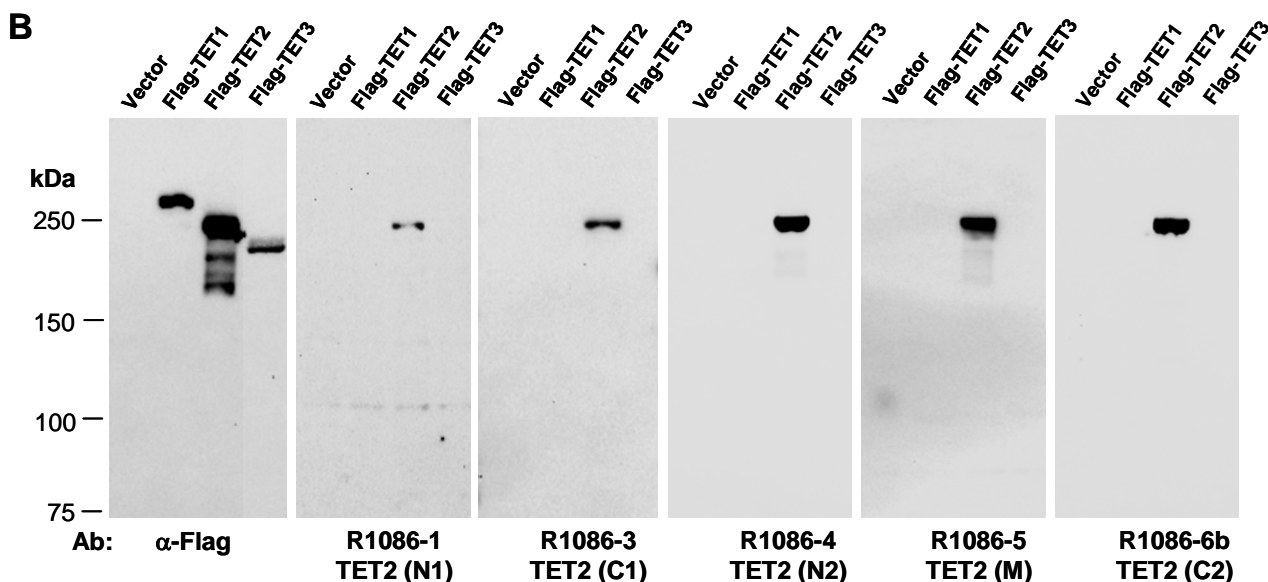
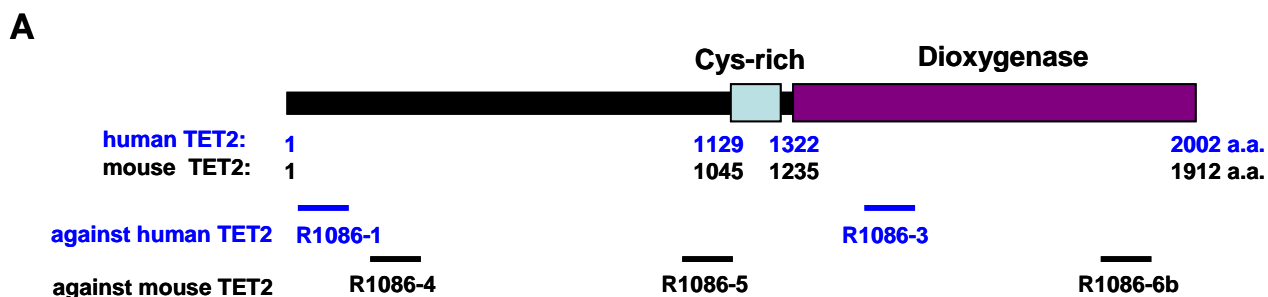


Fig 1. (A) Schematic representation of TET2 domain structures. The immunogen regions for 5 independent TET2 polyclonal antibodies were indicated. **(B)** Western blot of total cell extracts from human 293 T cells transfected with the empty vector, or Flag-tagged murine TET1, TET2 or TET3; using indicated Abs at RT for 2h, indicating that all 5 TET2 antibodies do not cross-react with TET1 or TET3 under this condition.