



Order: (888)-282-5810 (Phone)  
(818)-707-0392 (Fax)  
[order@abiocode.com](mailto:order@abiocode.com)  
Web: [www.Abiocode.com](http://www.Abiocode.com)

---

## **GPR153 (C) Antibody, Rabbit Polyclonal**

**Cat#: R0926-2**

**Quantity: 100 ul**

**Predicted | Observed MW: 65 | 75 kDa**

**Lot#: Refer to vial**

**Application: WB, IP**

**Uniprot ID: Q6NV75**

### **Background:**

Probable G-protein coupled receptor 153 (GPR153) is a multi-pass membrane protein that belongs to the G-protein coupled receptor 1 family. This family of proteins has many receptors for biogenic amines which are major drug targets. GPR153 is an orphan receptor and is expressed highly in the central nervous system and the thalamus, cerebellum and the arcuate nucleus.

### **Other Names:**

Probable G-protein coupled receptor 153, G-protein coupled receptor PGR1, PGR1

### **Source and Purity:**

Rabbit polyclonal antibodies were produced by immunizing animals with a GST-fusion protein containing the C-terminal region of human GPR153. Antibodies were purified by affinity purification using immunogen.

### **Storage Buffer and Condition:**

Supplied in 1 x PBS (pH 7.4), 100 ug/ml BSA, 40% Glycerol, 0.01% NaN<sub>3</sub>. Store at -20 °C. Stable for 6 months from date of receipt.

### **Species Specificity:**

Human, Mouse

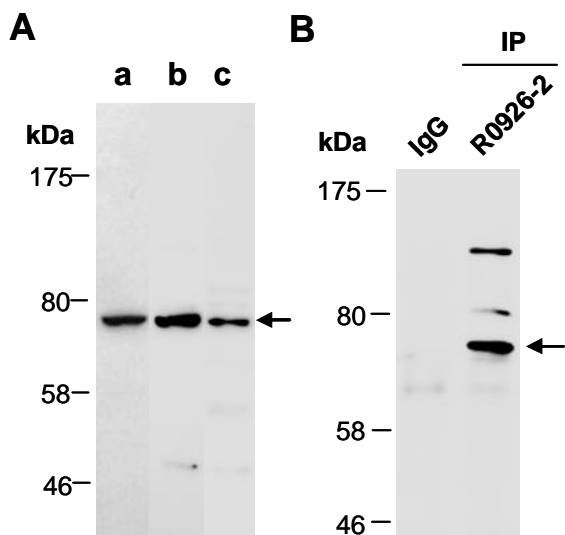
### **Tested Applications:**

WB: 1:500-1:2,000 (detect endogenous protein\*)

IP: 1:100-1:200

\*: The apparent protein size on WB may be different from the calculated M.W. due to modifications.

**Product Data:**



**Fig 1. (A)** Western blot of total cell extracts from a. human K562, b. human Jurkat, c. mouse brain, using Ab (R0926-2) at RT for 2 h. **(B)** Total extracts from human Jurkat were immunoprecipitated (IP) with IgG or anti-GPR153 (C) (R0926-2); followed by WB with the same Ab and Rabbit IgG light chain-specific 2nd antibody.