



Order: (888)-282-5810 (Phone)
(818)-707-0392 (Fax)
order@abiocode.com
Web: www.Abiocode.com

BCL6 (N1) Antibody, Rabbit Polyclonal

Cat#: R0107-1

Quantity: 100 ul

Predicted | Observed M.W.: 79 | 100 kDa

Lot#: Refer to vial

Application: WB

Uniprot ID: P41182

Background:

B-cell CLL/lymphoma 6 (BCL6) is a zinc finger transcription factor that acts as a sequence-specific repressor of transcription. It has been shown to regulate the transcription of STAT-dependent IL-4 responses of B cells. It contains an N-terminal POZ domain that interacts with other proteins to function as transcription co-repressors. The gene encoding BCL6 protein has been found to be translocated and mutated in diffuse large-cell lymphoma (DLCL) and may play a role in the pathogenesis of DLCL.

Other Names:

B-cell lymphoma 6 protein, B-cell lymphoma 5 protein, Protein LAZ-3, Zinc finger and BTB domain-containing protein 27, zinc finger protein 51, BCL5, LAZ3, ZBTB27, ZNF51, BCL6A

Source and Purity:

Rabbit polyclonal antibodies were produced by immunizing animals with a GST-fusion protein containing the N-terminal region of human BCL6. Antibodies were purified by affinity purification using immunogen.

Storage Buffer and Condition:

Supplied in 1 x PBS (pH 7.4), 100 ug/ml BSA, 40% Glycerol, 0.01% NaN₃. Store at -20 °C. Stable for 6 months from date of receipt.

Species Specificity:

Human, Mouse

Recommended Conditions:

WB: 1:1,000-1:3,000 (detect endogenous protein*)

*: The apparent protein size on WB may be different from the calculated M.W. due to modifications.

Product Data:

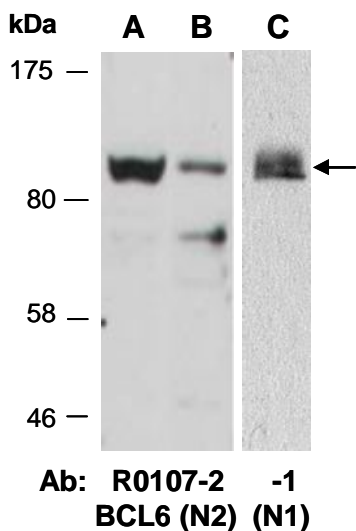


Fig 1. Western blot of total cell extracts from (A, C) mouse brain, (B) human Jurkat; using 2 independent Abs against 2 distinct regions of human BCL6 at RT for 2 h.