



Order: (888)-282-5810 (Phone)
(818)-707-0392 (Fax)
order@abiocode.com
Web: www.Abiocode.com

INADL (N) Antibody, Rabbit Polyclonal

Cat#: R1656-1

Lot#: Refer to vial

Quantity: 100 ul

Application: WB, IP

Predicted | Observed M.W.: 196 | 210, 180 kDa

Uniprot ID: Q8NI35

Background:

InaD-like protein (INADL) is a protein with multiple PDZ domains. PDZ domains mediate protein-protein interactions, and proteins with multiple PDZ domains often organize multimeric complexes at the plasma membrane. INADL localizes to tight junctions and to the apical membrane of epithelial cells. A similar protein in *Drosophila* is a scaffolding protein which tethers several members of a multimeric signaling complex in photoreceptors [provided by RefSeq].

Other Names:

InaD-like protein, Inadl protein, hINADL, Pals1-associated tight junction protein, Protein associated to tight junctions, PATJ, Cipp

Source and Purity:

Rabbit polyclonal antibodies were produced by immunizing animals with a GST-fusion protein containing the N-terminal region of human INADL. Antibodies were purified by affinity purification using immunogen.

Storage Buffer and Condition:

Supplied in 1 x PBS (pH 7.4), 100 ug/ml BSA, 40% Glycerol, 0.01% NaN₃. Store at -20 °C. Stable for 6 months from date of receipt.

Species Specificity:

Human

Tested Applications:

WB: 1:1,000-1:3,000 (detect endogenous protein*)

IP: 1:100-1:200

*: The apparent protein size on WB may be different from the calculated M.W. due to modifications.

Product Data:

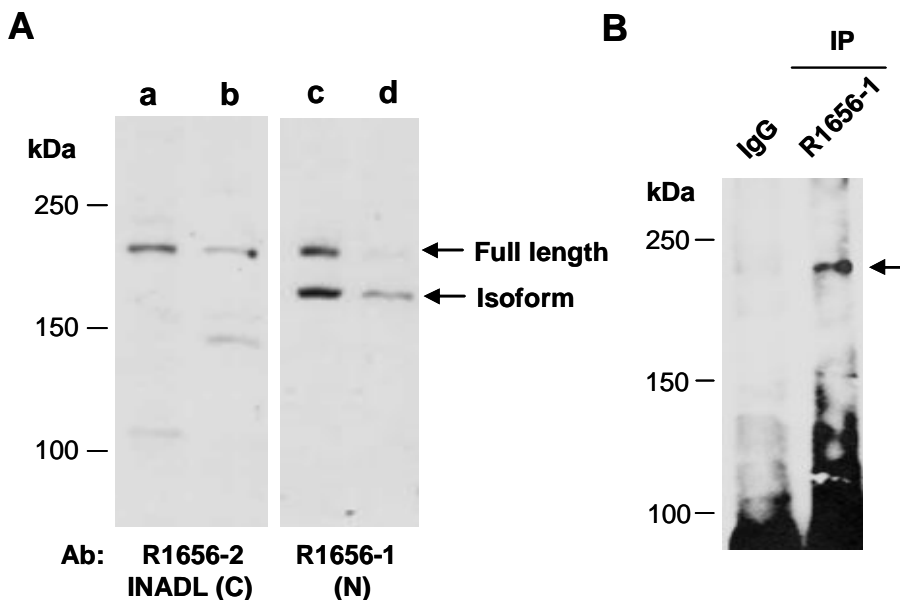


Fig 1. (A) Western blot of total cell extracts from a, c. human HeLa; b, d. human Jurkat; using 2 independent Abs against 2 distinct regions of human INADL at RT for 2 h. **(B)** Total extracts from human HeLa were immunoprecipitated (IP) with IgG or anti-INADL (N) (R1656-1); followed by WB with the same Ab.