



Order: (888)-282-5810 (Phone)
(818)-707-0392 (Fax)
order@abiocode.com
Web: www.Abiocode.com

KDM4C (C) Antibody, Rabbit Polyclonal

Cat#: R0918-2

Quantity: 100 ul

Predicted | Observed M.W.: 120 kDa

Lot#: Refer to vial

Application: WB

Uniprot ID: Q9H3R0

Background:

Lysine-specific demethylase 4C (KDM4C) is a histone demethylase that belongs to the JHDM3 histone demethylase family. It specifically demethylates 'Lys-9' and 'Lys-36' residues of histone H3, thereby playing a central role in histone code. It does not demethylate histone H3 'Lys-4', H3 'Lys-27' nor H4 'Lys-20'. KDM4C demethylates trimethylated H3 'Lys-9' and H3 'Lys-36' residue, but not mono- and dimethylated residues.

Other Names:

Lysine-specific demethylase 4C, Gene amplified in squamous cell carcinoma 1 protein, GASC-1 protein, JmjC domain-containing histone demethylation protein 3C, Jumonji domain-containing protein 2C, GASC1, JHDM3C, JMJD2C, KIAA0780

Source and Purity:

Rabbit polyclonal antibodies were produced by immunizing animals with a GST-fusion protein containing the C-terminal region of human KDM4C. Antibodies were purified by affinity purification using immunogen.

Storage Buffer and Condition:

Supplied in 1 x PBS (pH 7.4), 100 ug/ml BSA, 40% Glycerol, 0.01% NaN₃. Store at -20 °C. Stable for 6 months from date of receipt.

Species Specificity:

Human, Mouse

Tested Applications:

WB: 1:1,000-1:3,000

*: The apparent protein size on WB may be different from the calculated M.W. due to modifications.

Product Data:

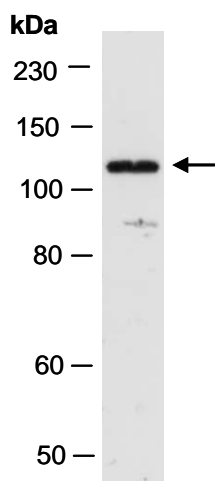


Fig 1. Western blot of total cell extracts from mouse brain, using anti-KDM4C (C) (R0918-2) at RT for 2 h.