



Order: (888)-282-5810 (Phone)
(818)-707-0392 (Fax)
order@abiocode.com
Web: www.Abiocode.com

PJA2 (vPair™) Antibodies

Cat#: R2132-vp

Lot#: Refer to vial

Predicted I Observed M.W.: 78 I 100 kDa

Uniprot ID: O43164

Application: WB

Quantity: 50 ul PJA2 (N) (R2132-1) Rabbit Polyclonal Antibody &

50 ul PJA2 (C) (R2132-2) Rabbit Polyclonal Antibody

Product Introduction:

vPair™ antibodies represent a pair of fully characterized antibodies that recognize two different regions of a target protein. The product is developed by Abiocode to address whether the signal observed truly represents the protein of interest, an often encountered issue in antibody-based assays. The use of a pair of fully characterized vPair™ antibodies in the same assay can validate signal specificity since vPair™ antibodies recognize two independent epitopes of the same protein. Different sets of vPair™ antibodies are developed at Abiocode to work with specific applications, including antibody arrays, Western blot, IP-Western, ChIP, IHC, and FACS.

Background:

E3 ubiquitin-protein ligase Praja-2 (PJA2) contains a RING-type zinc finger domain and has E2-dependent E3 ubiquitin-protein ligase activity. PJA2 is responsible for ubiquitination of cAMP-dependent protein kinase type I and type II-alpha/beta regulatory subunits and for targeting them for proteasomal degradation. PJA2 is essential for PKA-mediated long-term memory processes.

Other Names:

E3 ubiquitin-protein ligase Praja-2, Praja2, RING finger protein 131, KIAA0438, Neurodap1, RNF131

Source and Purity:

Rabbit polyclonal antibodies were produced by immunizing animals with GST-fusion proteins containing either the N-terminal [PJA2 (N) (R2132-1)] or the C-terminal [PJA2 (C) (R2132-2)] region of human PJA2. Antibodies were purified by affinity purification using immunogen.

Storage Buffer and Condition:

Supplied in 1 x PBS (pH 7.4), 100 ug/ml BSA, 40% Glycerol, 0.01% NaN₃. Store at -20 °C. Stable for 6 months from date of receipt.

Species Specificity:

Human

Tested Applications:

WB: 1:1,000-1:3,000 (detect endogenous protein*)

*: The apparent protein size on WB may be different from the calculated M.W. due to modifications.

Product Data:

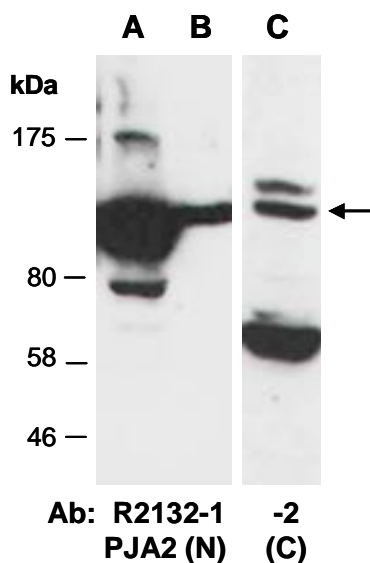


Fig 1. Western blot of total cell extracts from (A, C) human HeLa, (B) human Jurkat; using 2 independent Abs against 2 distinct regions of human PJA2 at RT for 2 h.