



Order: (888)-282-5810 (Phone)
(818)-707-0392 (Fax)
order@abiocode.com
Web: www.Abiocode.com

ELMO3 (C) Antibody, Rabbit Polyclonal

Cat#: R2272-2b

Quantity: 100 ul

Predicted | Observed MW: 81 | 70, 80 kDa

Lot#: Refer to vial

Application: WB, IP

Uniprot ID: Q96BJ8

Background:

Engulfment and cell motility protein 3 (ELMO3) is similar to a *C. elegans* protein that functions in phagocytosis of apoptotic cells and in cell migration. Other members of this small family of engulfment and cell motility (ELMO) proteins have been shown to interact with the dedicator of cyto-kinesis 1 protein to promote phagocytosis and affect cell shape changes [provided by RefSeq].

Other Names:

Engulfment and cell motility protein 3, CED12, CED-12, ELMO-3, FLJ13824

Source and Purity:

Rabbit polyclonal antibodies were produced by immunizing animals with a GST-fusion protein containing the C-terminal region of human ELMO3. Antibodies were purified by affinity purification using immunogen.

Storage Buffer and Condition:

Supplied in 1 x PBS (pH 7.4), 100 ug/ml BSA, 40% Glycerol, 0.01% NaN₃. Store at -20 °C. Stable for 6 months from date of receipt.

Species Specificity:

Human, Mouse

Tested Applications:

WB: 1:1,000-1:3,000 (detect endogenous protein*)

IP: 1:100-1:200

*: The apparent protein size on WB may be different from the calculated M.W. due to modifications.

Product Data:

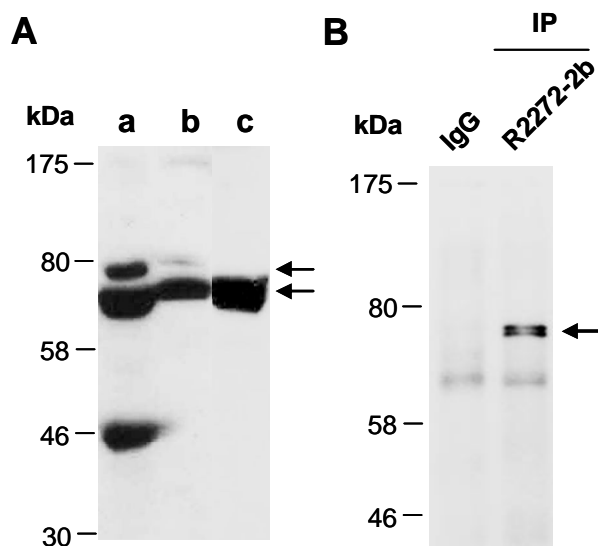


Fig 1. Western blot of total cell extracts from a. mouse brain, b. mouse thymus, c. human Jurkat; using anti-ELMO3 (C) (R2272-2b) at RT for 2 h. This antibody detects 2 isoforms (70 kD and 80 kD) of ELMO3. **(B)** Total extracts from human Jurkat were immunoprecipitated (IP) with IgG or anti-ELMO3 (C) (R2272-2b); followed by WB with the same Ab and Rabbit IgG light chain-specific 2nd antibody.