



Order: (888)-282-5810 (Phone)
(818)-707-0392 (Fax)
order@abiocode.com
Web: www.Abiocode.com

MMS19 (C) Antibody, Rabbit Polyclonal

Cat#: R2448-2

Quantity: 100 ul

Predicted | Observed M.W.: 113 kDa

Lot#: Refer to vial

Application: WB

Uniprot ID: Q96T76

Background:

MMS19 nucleotide excision repair protein homolog (MMS19) is a key component of the cytosolic iron-sulfur protein assembly (CIA) complex, a multiprotein complex that mediates the incorporation of iron-sulfur cluster into apoproteins specifically involved in DNA metabolism and genomic integrity. In the CIA complex, MMS19 acts as an adapter between early-acting CIA components and a subset of cellular target iron-sulfur proteins such as ERCC2/XPD, FANCI and RTEL1, thereby playing a key role in nucleotide excision repair (NER) and RNA polymerase II (POL II) transcription. As part of the mitotic spindle-associated MMS19 complex, MMS19 also plays a role in chromosome segregation, probably by facilitating iron-sulfur cluster assembly into ERCC2/XPD. MMS19 indirectly acts as a transcriptional coactivator of estrogen receptor (ER), via its role in iron-sulfur insertion into some component of the TFIIF-machinery.

Other Names:

MMS19 nucleotide excision repair protein homolog, hMMS19, MET18 homolog, MMS19-like protein, hMMS19, MET18, MMS19L

Source and Purity:

Rabbit polyclonal antibodies were produced by immunizing animals with a GST-fusion protein containing the C-terminal region of human MMS19. Antibodies were purified by affinity purification using immunogen.

Storage Buffer and Condition:

Supplied in 1 x PBS (pH 7.4), 100 ug/ml BSA, 40% Glycerol, 0.01% NaN₃. Store at -20 °C. Stable for 6 months from date of receipt.

Species Specificity:

Human

Tested Applications:

WB: 1:1,000-1:3,000 (detect endogenous protein*)

*: The apparent protein size on WB may be different from the calculated M.W. due to modifications.

For research use only. Not for therapeutic or diagnostic purposes.
Abiocode, Inc., 29397 Agoura Rd., Ste 106, Agoura Hills, CA 91301

Product Data:

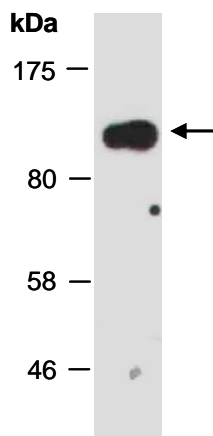


Fig 1. Western blot of total cell extracts from human HeLa; using anti-MMS19 (C) (R2448-2) at RT for 2 h.