



Order: (888)-282-5810 (Phone)  
(818)-707-0392 (Fax)  
[order@abiocode.com](mailto:order@abiocode.com)  
Web: [www.Abiocode.com](http://www.Abiocode.com)

---

## **FSHR (N) Antibody, Rabbit Polyclonal**

**Cat#: R2406-1**

**Quantity: 100 ul**

**Predicted | Observed M.W.: 78 | 100 kDa**

**Lot#: Refer to vial**

**Application: WB**

**Uniprot ID: P23945**

### **Background:**

Follicle-stimulating hormone receptor (FSHR) belongs to family 1 of G-protein coupled receptors. It is a multi-pass cell membrane protein and is the receptor for follicle stimulating hormone and functions in gonad development. The activity of this receptor is mediated by G proteins which activate adenylate cyclase. Mutations in this gene cause ovarian dysgenesis type 1, and also ovarian hyperstimulation syndrome. Alternative splicing results in multiple transcript variants of FSHR.

### **Other Names:**

Follicle-stimulating hormone receptor, FSH-R, Follitropin receptor, FSHRO, LGR1, ODG1

### **Source and Purity:**

Rabbit polyclonal antibodies were produced by immunizing animals with a GST-fusion protein containing the N-terminal region of human FSHR. Antibodies were purified by affinity purification using immunogen.

### **Storage Buffer and Condition:**

Supplied in 1 x PBS (pH 7.4), 100 ug/ml BSA, 40% Glycerol, 0.01% NaN<sub>3</sub>. Store at -20 °C. Stable for 6 months from date of receipt.

### **Species Specificity:**

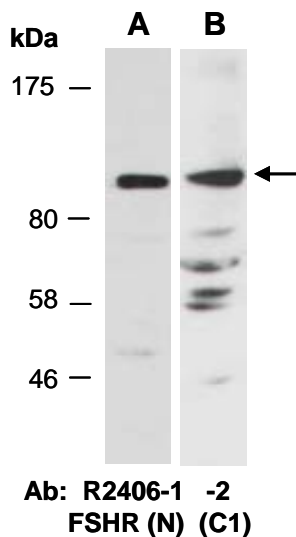
Human

### **Tested Applications:**

WB: 1:1,000-1:3,000 (detect endogenous protein\*)

\*: The apparent protein size on WB may be different from the calculated M.W. due to modifications.

**Product Data:**



**Fig 1.** Western blot of total cell extracts from (A, B) human HeLa; using 2 independent Abs against 2 distinct regions of human FSHR at RT for 2 h.