



Order: (888)-282-5810 (Phone)  
(818)-707-0392 (Fax)  
[order@abiocode.com](mailto:order@abiocode.com)  
Web: [www.Abiocode.com](http://www.Abiocode.com)

---

## **MLL2 (N) Antibody, Rabbit Polyclonal**

**Cat#: R0118-1**

**Quantity: 100 ul**

**Predicted M.W.: 593 kDa**

**Lot#: Refer to vial**

**Application: WB**

**Uniprot ID: O14686**

### **Background:**

MLL2 is a histone methyltransferase that methylates 'Lys-4' of histone H3 (H3K4me). H3K4me represents a specific tag for epigenetic transcriptional activation. MLL2 plays a central role in beta-globin locus transcription regulation by being recruited by NFE2. MLLS acts as a coactivator for estrogen receptor by being recruited by ESR1, thereby activating transcription. MLL2 is also required during the transcriptionally active period of oocyte growth for the establishment and/or maintenance of bulk H3K4 trimethylation (H3K4me3), global transcriptional silencing that precedes resumption of meiosis, oocyte survival and normal zygotic genome activation.

### **Other Names:**

Histone-lysine N-methyltransferase 2D, MLL2, ALL1-related protein, ALR, KMT2D, Lysine N-methyltransferase 2D, Myeloid/lymphoid or mixed-lineage leukemia protein 2, MLL4

### **Source and Purity:**

Rabbit polyclonal antibodies were produced by immunizing animals with a GST-fusion protein containing the N-terminal region of human MLL2. Antibodies were purified by affinity purification using immunogen.

### **Storage Buffer and Condition:**

Supplied in 1 x PBS (pH 7.4), 100 ug/ml BSA, 40% Glycerol, 0.01% NaN<sub>3</sub>. Store at -20 °C. Stable for 6 months from date of receipt.

### **Species Specificity:**

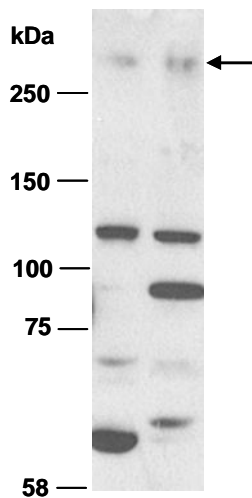
Human, Mouse

### **Recommended Conditions (tested):**

WB: 1:1,000-1:3,000 (detect endogenous protein\*)

\*: The apparent protein size on WB may be different from the calculated M.W. due to modifications.

**Product Data:**



**Fig 1.** Western blot of whole cell extract from (A) mouse brain, (B) human K562, using Ab (R0118-1) at RT for 2 h.