



Order: (888)-282-5810 (Phone)
(818)-707-0392 (Fax)
order@abiocode.com
Web: www.Abiocode.com

BHLH74 (vPair™) Antibodies

Cat#: R1216-vp

Lot#: Refer to vial

Predicted | Observed M.W.: 40 kDa

Uniprot ID: Q6NKN9

Application: WB

Quantity: Any 2 of the following:

50 ul BHLH74 (N1) (R1216-1) Rabbit Polyclonal Antibody

50 ul BHLH74 (N2) (R1216-2) Rabbit Polyclonal Antibody

50 ul BHLH74 (C) (R1216-3) Rabbit Polyclonal Antibody

Product Introduction:

vPair™ antibodies represent a pair of fully characterized antibodies that recognize two different regions of a target protein. The product is developed by Abiocode to address whether the signal observed truly represents the protein of interest, an often encountered issue in antibody-based assays. The use of a pair of fully characterized vPair™ antibodies in the same assay can validate signal specificity since vPair™ antibodies recognize two independent epitopes of the same protein. Different sets of vPair™ antibodies are developed at Abiocode to work with specific applications, including antibody arrays, Western blot, IP-Western, ChIP, IHC, and FACS.

Background:

Transcription factor Basic helix-loop-helix protein 74 (BHLH74) belongs to the basic helix-loop-helix (bHLH) DNA-binding superfamily. BHLH74 is a sequence-specific DNA binding transcription factor located in the nucleus. BHLH74 contains a Helix-loop-helix DNA-binding domain.

Other Names:

Transcription factor bHLH74, Basic helix-loop-helix protein 74, AtbHLH74, bHLH 74, Transcription factor EN 90, bHLH transcription factor bHLH074

Source and Purity:

Rabbit polyclonal antibodies were produced by immunizing animals with GST-fusion proteins containing the N-terminal [BHLH74 (N1) (R1216-1) and BHLH74 (N2) (R1216-2)] or the C-terminal [BHLH74 (C) (R1216-3)] region of *arabidopsis thaliana* BHLH74 (At1g10120). Antibodies were purified by affinity purification using immunogen.

Storage Buffer and Condition:

Supplied in 1 x PBS (pH 7.4), 100 ug/ml BSA, 40% Glycerol, 0.01% NaN₃. Store at -20 °C. Stable for 6 months from date of receipt.

Species Specificity:

Arabidopsis thaliana

Tested Applications:

WB: 1:1,000-1:3,000 (detect endogenous protein*)

*: The apparent protein size on WB may be different from the calculated M.W. due to modifications.

Product Data:

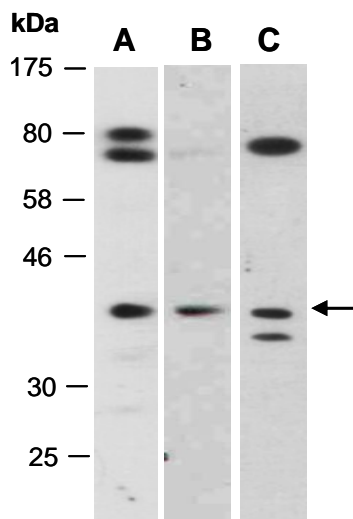


Fig 1. Western blot of total cell extracts from *arabidopsis thaliana*; using (A) anti-BHLH74 (N1) (R1216-1), (B) anti-BHLH74 (N2) (R1216-2), (C) anti-BHLH74 (C) (R1216-3) at RT for 2 h.