



Order: (888)-282-5810 (Phone)
(818)-707-0392 (Fax)
order@abiocode.com
Web: www.Abiocode.com

BHLH76 (N) Antibody, Rabbit Polyclonal

Cat#: R1232-1

Quantity: 100 ul

Predicted | Observed M.W.: 43 kDa

Lot#: Refer to vial

Application: WB

Uniprot ID: Q9C670

Background:

Transcription factor Basic helix-loop-helix protein 76 (BHLH76) is also known as CIB5 (cryptochrome-interacting basic-helix-loop-helix 5), which belongs to the basic helix-loop-helix (bHLH) DNA-binding superfamily. BHLH76 is related to CIB1 (AT4G34530), and it interacts with CRY2 and forms heterodimer with CIB1 in vitro. BHLH76 regulates flowering time redundantly with CIB1.

Other Names:

CIB5, CRYPTOCHROME-INTERACTING BASIC-HELIX-LOOP-HELIX 5, Transcription factor bHLH76, Basic helix-loop-helix protein 76, AtbHLH76, bHLH 76, Transcription factor EN 83, bHLH transcription factor bHLH076

Source and Purity:

Rabbit polyclonal antibodies were produced by immunizing animals with a GST-fusion protein containing the N-terminal region of *arabidopsis thaliana* BHLH76 (At1g26260). Antibodies were purified by affinity purification using immunogen.

Storage Buffer and Condition:

Supplied in 1 x PBS (pH 7.4), 100 ug/ml BSA, 40% Glycerol, 0.01% NaN₃. Store at -20 °C. Stable for 6 months from date of receipt.

Species Specificity:

Arabidopsis thaliana

Tested Applications:

WB: 1:1,000-1:3,000 (detect endogenous protein*)

*: The apparent protein size on WB may be different from the calculated M.W. due to modifications.

Product Data:

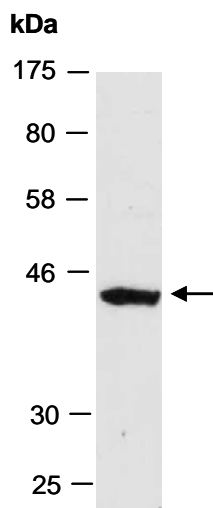


Fig 1. Western blot of total cell extracts from *arabidopsis thaliana*; using anti-BHLH76 (N) (R1232-1) at RT for 2 h.