



Order: (888)-282-5810 (Phone)  
(818)-707-0392 (Fax)  
[order@abiocode.com](mailto:order@abiocode.com)  
Web: [www.Abiocode.com](http://www.Abiocode.com)

---

## **XCT (M) Antibody, Rabbit Polyclonal**

**Cat#:** R1252-2

**Quantity:** 100 ul

**Predicted | Observed M.W.:** 39 kDa

**Lot#:** Refer to vial

**Application:** WB

**Uniprot ID:** Q8H110

### **Background:**

Protein XAP5 CIRCADIAN TIMEKEEPER (XCT) is involved in light regulation of the circadian clock and photomorphogenesis. XCT may play a global role in coordinating growth in response to the light environment and acts as a light quality sensor directing both negative and positive transcriptional regulation. XCT inhibits growth in red light but promote growth in blue light. XCT inhibits clock gene expression in diurnal cycles, while it plays no role in the control of flowering time.

### **Other Names:**

Protein XAP5 CIRCADIAN TIMEKEEPER

### **Source and Purity:**

Rabbit polyclonal antibodies were produced by immunizing animals with a GST-fusion protein containing the middle region of *arabidopsis thaliana* XCT (At2g21150). Antibodies were purified by affinity purification using immunogen.

### **Storage Buffer and Condition:**

Supplied in 1 x PBS (pH 7.4), 100 ug/ml BSA, 40% Glycerol, 0.01% NaN<sub>3</sub>. Store at -20 °C. Stable for 6 months from date of receipt.

### **Species Specificity:**

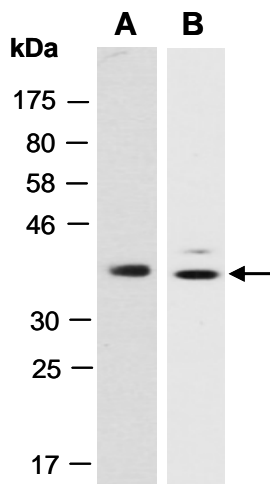
*Arabidopsis thaliana*

### **Tested Applications:**

WB: 1:1,000-1:3,000 (detect endogenous protein\*)

\*: The apparent protein size on WB may be different from the calculated M.W. due to modifications.

**Product Data:**



**Fig 1.** Western blot of total cell extracts from *Arabidopsis thaliana*; using (A) anti-XCT (M) (R1252-2), (B) anti-XCT (C) (R1252-3) at RT for 2 h.