



Order: (888)-282-5810 (Phone)
(818)-707-0392 (Fax)
order@abiocode.com
Web: www.Abiocode.com

PGK1 (vPair™) Antibodies

Cat#: R1640-vp

Predicted | Observed M.W.: 45 kDa

Application: WB

Lot#: Refer to vial

Uniprot ID: P00558

Quantity: 50 ul PGK1 (N) (R1640-1) Rabbit Polyclonal Antibody &
50 ul PGK1 (C) (R1640-2) Rabbit Polyclonal Antibody

Product Introduction:

vPair™ antibodies represent a pair of fully characterized antibodies that recognize two different regions of a target protein. The product is developed by Abiocode to address whether the signal observed truly represents the protein of interest, an often encountered issue in antibody-based assays. The use of a pair of fully characterized vPair™ antibodies in the same assay can validate signal specificity since vPair™ antibodies recognize two independent epitopes of the same protein. Different sets of vPair™ antibodies are developed at Abiocode to work with specific applications, including antibody arrays, Western blot, IP-Western, ChIP, IHC, and FACS.

Background:

Phosphoglycerate kinase 1 (PGK1) is a glycolytic enzyme that catalyzes the conversion of 1,3-diphosphoglycerate to 3-phosphoglycerate. PGK1 may also act as a cofactor for polymerase alpha. The PGK1 gene lies on the X-chromosome, while a related pseudogene has also been found on the X-chromosome and another on chromosome 19 [provided by RefSeq].

Other Names:

Phosphoglycerate kinase 1, Cell migration-inducing gene 10 protein, Primer recognition protein 2, PRP 2, PGKA, MIG10, OK/SW-cl.110

Source and Purity:

Rabbit polyclonal antibodies were produced by immunizing animals with GST-fusion proteins containing either the N-terminal [PGK1 (N) (R1640-1)] or the C-terminal [PGK1 (C) (R1640-2)] region of human PGK1. Antibodies were purified by affinity purification using immunogen.

Storage Buffer and Condition:

Supplied in 1 x PBS (pH 7.4), 100 ug/ml BSA, 40% Glycerol, 0.01% NaN₃. Store at -20 °C. Stable for 6 months from date of receipt.

**For research use only. Not for therapeutic or diagnostic purposes.
Abiocode, Inc., 29397 Agoura Rd., Ste 106, Agoura Hills, CA 91301**

Tested Applications:

WB: 1:1,000-1:3,000 (detect endogenous protein*)

*: The apparent protein size on WB may be different from the calculated M.W. due to modifications.

Species Specificity:

Human, Mouse

Product Data:

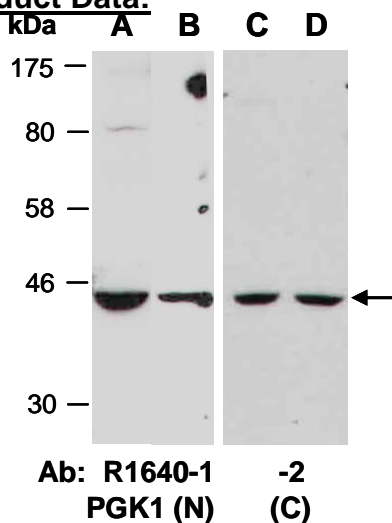


Fig 1. Western blot of total cell extracts from (A) mouse brain, (B, D) human Jurkat, (C) human HeLa; using 2 independent Abs against 2 distinct regions of human PGK1 at RT for 2 h.