



Order: (888)-282-5810 (Phone)
(818)-707-0392 (Fax)
order@abiocode.com
Web: www.Abiocode.com

NF2 (C1) Antibody, Rabbit Polyclonal

Cat#: R0560-2b

Quantity: 100 ul

Predicted | Observed M.W.: 70 | 90 kDa

Lot#: Refer to vial

Application: WB

Uniprot ID: P35240

Background:

NF2 is similar to some members of the ERM (ezrin, radixin, moesin) family of proteins that are thought to link cytoskeletal components with proteins in the cell membrane. NF2 has been shown to interact with cell-surface proteins, proteins involved in cytoskeletal dynamics and proteins involved in regulating ion transport. Mutations in NF2 are associated with neurofibromatosis type II which is characterized by nervous system and skin tumors and ocular abnormalities.

Other Names:

Merlin, Moesin-ezrin-radixin-like protein, Neurofibromin-2, Schwannomerlin, Schwannomin, SCH

Source and Purity:

Rabbit polyclonal antibodies were produced by immunizing animals with a GST-fusion protein containing C-terminal region of human NF2. Antibodies were purified by affinity purification using immunogen.

Storage Buffer and Condition:

Supplied in 1 x PBS (pH 7.4), 100 ug/ml BSA, 40% Glycerol, 0.01% NaN₃. Store at -20 °C. Stable for 6 months from date of receipt.

Species Specificity:

Human, Mouse

Tested Applications:

WB: 1:1,000-1:3,000 (detect endogenous protein*)

*: The apparent protein size on WB may be different from the calculated M.W. due to modifications.

Product Data:

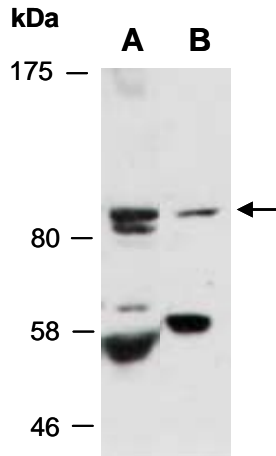


Fig 1. Western blot of total cell extracts from (A) mouse thymus; (B) human Jurkat; using anti-NF2 (C1) (R0560-2b) at RT for 2 h.