



Order: (888)-282-5810 (Phone)  
(818)-707-0392 (Fax)  
[order@abiocode.com](mailto:order@abiocode.com)  
Web: [www.Abiocode.com](http://www.Abiocode.com)

---

## **LBR (N1) Antibody, Rabbit Polyclonal**

**Cat#: R0812-1**

**Quantity: 100 ul**

**Predicted | Observed M.W.: 71 kDa**

**Lot#: Refer to vial**

**Application: WB**

**Uniprot ID: Q14739**

### **Background:**

LBR belongs to the ERG4/ERG24 family. LBR localized in the nuclear envelope inner membrane and anchors the lamina and the heterochromatin to the membrane. LBR may mediate interaction between chromatin and lamin B. Mutations of LBR has been associated with autosomal recessive HEM/Greenberg skeletal dysplasia.

### **Other Names:**

Lamin-B receptor, Integral nuclear envelope inner membrane protein, LMN2R, DHCR14B

### **Source and Purity:**

Rabbit polyclonal antibodies were produced by immunizing animals with a GST-fusion protein containing N-terminal region of human LBR. Antibodies were purified by affinity purification using immunogen.

### **Storage Buffer and Condition:**

Supplied in 1 x PBS (pH 7.4), 100 ug/ml BSA, 40% Glycerol, 0.01% NaN<sub>3</sub>. Store at -20 °C. Stable for 6 months from date of receipt.

### **Species Specificity:**

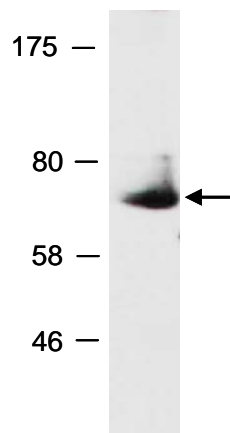
Human

### **Tested Applications:**

WB: 1:1,000-1:3,000 (detect endogenous protein\*)

\*: The apparent protein size on WB may be different from the calculated M.W. due to modifications.

**Product Data:**



**Fig 1.** Western blot of total cell extracts from human Jurkat; using anti-LBR (N1) (R0812-1) at RT for 2 h.