



Order: (888)-282-5810 (Phone)
(818)-707-0392 (Fax)
order@abiocode.com
Web: www.Abiocode.com

ATG7 (M) Antibody, Rabbit Polyclonal

Cat#: R2869-2

Quantity: 100 ul

Predicted | Observed M.W.: 78 kDa

Lot#: Refer to vial

Application: WB

Uniprot ID: Q9D906

Background:

ATG7 functions as an E1 enzyme essential for multisubstrates such as ATG8-like proteins and ATG12. ATG7 forms intermediate conjugates with ATG8-like proteins (GABARAP, GABARAPL1, GABARAPL2 or MAP1LC3A). PE-conjugation to ATG8-like proteins is essential for autophagy. ATG7 also acts as an E1 enzyme for ATG12 conjugation to ATG5 and ATG3.

Other Names:

Ubiquitin-like modifier-activating enzyme ATG7, ATG12-activating enzyme E1 ATG7. Autophagy-related protein 7, APG7-like, hAGP7, Ubiquitin-activating enzyme E1-like protein, APG7L, GSA7

Source and Purity:

Rabbit polyclonal antibodies were produced by immunizing animals with a GST-fusion protein containing the middle region of mouse ATG7. Antibodies were purified by affinity purification using immunogen.

Storage Buffer and Condition:

Supplied in 1 x PBS (pH 7.4), 100 ug/ml BSA, 40% Glycerol, 0.01% NaN₃. Store at -20 °C. Stable for 6 months from date of receipt.

Species Specificity:

Human, Mouse

Tested Applications:

WB: 1:1,000-1:3,000 (detect endogenous protein*)

*: The apparent protein size on WB may be different from the calculated M.W. due to modifications.

Product Data:

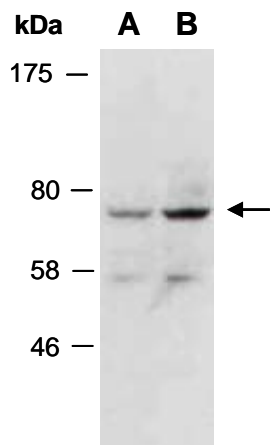


Fig 1. Western blot of total cell extracts from (A) human HeLa; (B) human Jurkat; using anti-ATG7 (M) (R2869-2) at RT for 2 h.