



Order: (888)-282-5810 (Phone)
(818)-707-0392 (Fax)
order@abiocode.com
Web: www.Abiocode.com

CHGB (C) Antibody, Rabbit Polyclonal

Cat#: R2834-2

Quantity: 100 ul

Predicted | Observed M.W.: 78 | 100 kDa

Lot#: Refer to vial

Application: WB

Uniprot ID: P05060

Background:

CHGB is a neuroendocrine secretory granule protein, which may be the precursor for other biologically active peptides. CHGB is expressed in the adrenal medulla, and in pheochromocytoma, but not expressed in liver.

Other Names:

Secretogranin-, Chromogranin-B, CgB, Secretogranin I, Sgl, SCG1, cleaved into GAWK peptide and CCB peptide

Source and Purity:

Rabbit polyclonal antibodies were produced by immunizing animals with a GST-fusion protein containing C-terminal region of human CHGB. Antibodies were purified by affinity purification using immunogen.

Storage Buffer and Condition:

Supplied in 1 x PBS (pH 7.4), 100 ug/ml BSA, 40% Glycerol, 0.01% NaN₃. Store at -20 °C. Stable for 6 months from date of receipt.

Species Specificity:

Human, Mouse

Tested Applications:

WB: 1:1,000-1:3,000 (detect endogenous protein*)

*: The apparent protein size on WB may be different from the calculated M.W. due to modifications.

Product Data:

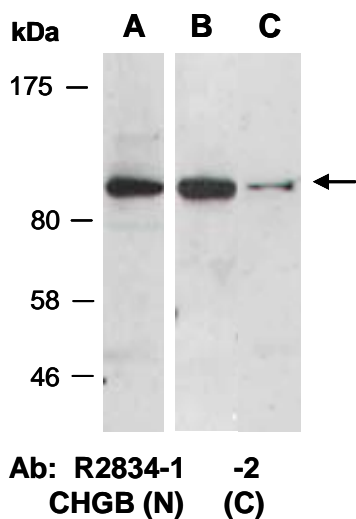


Fig 1. Western blot of total cell extracts from A, B) mouse brain; C) human HeLa; using 2 independent Abs against 2 distinct regions of human CHGB at RT for 2 h.