



Order: (888)-282-5810 (Phone)  
(818)-707-0392 (Fax)  
[order@abiocode.com](mailto:order@abiocode.com)  
Web: [www.Abiocode.com](http://www.Abiocode.com)

---

## PICALM (C) Antibody, Rabbit Polyclonal

**Cat#:** R2817-2

**Quantity:** 100 ul

**Predicted | Observed M.W.:** 71 kDa

**Lot#:** Refer to vial

**Application:** WB

**Uniprot ID:** Q13492

### **Background:**

PICALM recruits clathrin and adapter protein complex 2 (AP2) to cell membranes at sites of coated-pit formation and clathrin-vesicle assembly. PICALM may be required to determine the amount of membrane to be recycled, possibly by regulating the size of the clathrin cage. PICALM is involved in AP2-dependent clathrin-mediated endocytosis at the neuromuscular junction.

### **Other Names:**

Phosphatidylinositol-binding clathrin assembly protein, Clathrin assembly lymphoid myeloid leukemia protein, CALM, CLTH

### **Source and Purity:**

Rabbit polyclonal antibodies were produced by immunizing animals with a GST-fusion protein containing C-terminal region of human PICALM. Antibodies were purified by affinity purification using immunogen.

### **Storage Buffer and Condition:**

Supplied in 1 x PBS (pH 7.4), 100 ug/ml BSA, 40% Glycerol, 0.01% NaN<sub>3</sub>. Store at -20 °C. Stable for 6 months from date of receipt.

### **Species Specificity:**

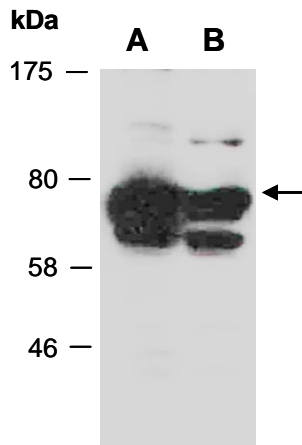
Human

### **Tested Applications:**

WB: 1:1,000-1:3,000 (detect endogenous protein\*)

\*: The apparent protein size on WB may be different from the calculated M.W. due to modifications.

**Product Data:**



**Fig 1.** Western blot of total cell extracts from (A) human HeLa, (B) human Jurkat; using anti-PICALM (C) (R2817-2) at RT for 2 h.