



Order: (888)-282-5810 (Phone)
(818)-707-0392 (Fax)
order@abiocode.com
Web: www.Abiocode.com

LHCGR (N) Antibody, Rabbit Polyclonal

Cat#: R2514-1

Quantity: 100 ul

Predicted | Observed M.W.: 79 | 90 kDa

Lot#: Refer to vial

Application: WB

Uniprot ID: P22888

Background:

Lutropin-choriogonadotropic hormone receptor (LHCGR) is the receptor for both luteinizing hormone and choriogonadotropin. LHCGR belongs to the G-protein coupled receptor 1 family, and its activity is mediated by G proteins which activate adenylate cyclase. Mutations in this gene result in disorders of male secondary sexual character development, including familial male precocious puberty, also known as testotoxicosis, hypogonadotropic hypogonadism, Leydig cell adenoma with precocious puberty, and male pseudohermaphroditism with Leydig cell hypoplasia [provided by RefSeq].

Other Names:

Lutropin-choriogonadotropic hormone receptor, LH/CG-R, Luteinizing hormone receptor, LHR, LSH-R, HHG, LCGR, LGR2, ULG5, LHRHR

Source and Purity:

Rabbit polyclonal antibodies were produced by immunizing animals with a GST-fusion protein containing the C-terminal region of human LHCGR. Antibodies were purified by affinity purification using immunogen.

Storage Buffer and Condition:

Supplied in 1 x PBS (pH 7.4), 100 ug/ml BSA, 40% Glycerol, 0.01% NaN₃. Store at -20 °C. Stable for 6 months from date of receipt.

Species Specificity:

Human

Tested Applications:

WB: 1:1,000-1:3,000 (detect endogenous protein*)

*: The apparent protein size on WB may be different from the calculated M.W. due to modifications.

Product Data:

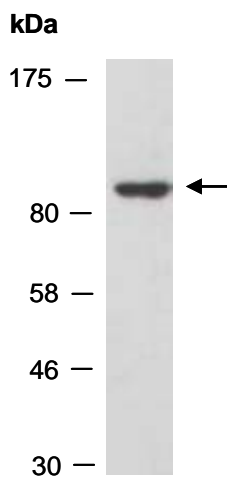


Fig 1. Western blot of total cell extracts from human HeLa, using anti-LHCGR (N) (R2514-1) at RT for 2 h.