



Order: (888)-282-5810 (Phone)  
(818)-707-0392 (Fax)  
[order@abiocode.com](mailto:order@abiocode.com)  
Web: [www.Abiocode.com](http://www.Abiocode.com)

---

## ASMTL (C) Antibody, Rabbit Polyclonal

**Cat#:** R0205-2

**Quantity:** 100 ul

**Predicted | Observed M.W.:** 69 | 75 kDa

**Lot#:** Refer to vial

**Application:** WB

**Uniprot ID:** O95671

### **Background:**

The ASMTL protein has an N-terminus that is similar to the multicopy associated filamentation (maf) protein of *Bacillus subtilis* and to orfE of *Escherichia coli*, while the C-terminus is similar to N-acetylserotonin O-methyltransferase. This *ASMTL* gene is located in the pseudoautosomal region 1 (PAR1) of X and Y chromosomes. Three transcript variants encoding different isoforms have been found for this gene. The function of the ASMTL protein is Unknown. The presence of the putative catalytic domain of S-adenosyl-L-methionine binding argues for a methyltransferase activity (provided by RefSeq and Uniprot)

### **Other Names:**

N-acetylserotonin O-methyltransferase-like protein, acetylserotonin O-methyltransferase-like, ASMTLX, ASMTLY

### **Source and Purity:**

Rabbit polyclonal antibodies were produced by immunizing animals with a GST-fusion protein containing the C-terminal region of human ASMTL. Antibodies were purified by affinity purification using immunogen.

### **Storage Buffer and Condition:**

Supplied in 1 x PBS (pH 7.4), 100 ug/ml BSA, 40% Glycerol, 0.01% NaN<sub>3</sub>. Store at -20 °C. Stable for 6 months from date of receipt.

### **Species Specificity:**

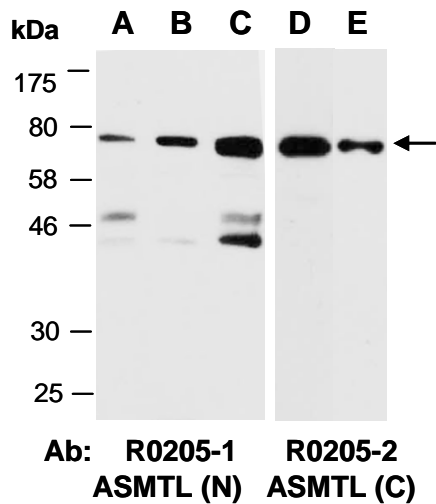
Human, Mouse

### **Tested Applications:**

WB: 1:1,000-1:3,000 (detect endogenous protein\*)

\*: The apparent protein size on WB may be different from the calculated M.W. due to modifications.

**Product Data:**



**Fig 1.** Western blot of total cell extracts from (A) human HeLa, (B) human Jurkat, (C, E) human H1299, (D) mouse brain; using 2 independent Abs against 2 distinct regions of human ASMTL at RT for 2 h.