



Order: (888)-282-5810 (Phone)  
(818)-707-0392 (Fax)  
[order@abiocode.com](mailto:order@abiocode.com)  
Web: [www.Abiocode.com](http://www.Abiocode.com)

---

## **TRAF3 (N) Antibody, Rabbit Polyclonal**

**Cat#: R1319-1**

**Quantity: 100 ul**

**Predicted | Observed M.W.: 64 kDa**

**Lot#: Refer to vial**

**Application: WB**

**Uniprot ID: Q13114**

### **Background:**

TRAF3 regulates pathways leading to the activation of NF-kappa-B and MAP kinases, and plays a central role in the regulation of B-cell survival. TRAF3 is part of signaling pathways leading to the production of cytokines and interferon. TRAF3 is required for normal antibody isotype switching from IgM to IgG. TRAF3 plays a role T-cell dependent immune responses. TRAF3 plays a role in the regulation of antiviral responses. TRAF3 is an essential constituent of several E3 ubiquitin-protein ligase complexes. TRAF3 may have E3 ubiquitin-protein ligase activity and promote 'Lys-63'-linked ubiquitination of target proteins. TRAF3 inhibits activation of NF-kappa-B in response to LTBR stimulation. TRAF3 inhibits TRAF2-mediated activation of NF-kappa-B. Down-regulates proteolytic processing of NFKB2, and thereby inhibits non-canonical activation of NF-kappa-B. TRAF3 promotes ubiquitination and proteasomal degradation of MAP3K14.

### **Other Names:**

TNF receptor-associated factor 3, CAP-1, CD40 receptor-associated factor 1, CRAF1, CD40-binding protein, CD40BP, LMP1-associated protein 1, LAP1, CAP1, CRAF1

### **Source and Purity:**

Rabbit polyclonal antibodies were produced by immunizing animals with a GST-fusion protein containing N-terminal region of human TRAF3. Antibodies were purified by affinity purification using immunogen.

### **Storage Buffer and Condition:**

Supplied in 1 x PBS (pH 7.4), 100 ug/ml BSA, 40% Glycerol, 0.01% NaN<sub>3</sub>. Store at -20 °C. Stable for 6 months from date of receipt.

### **Species Specificity:**

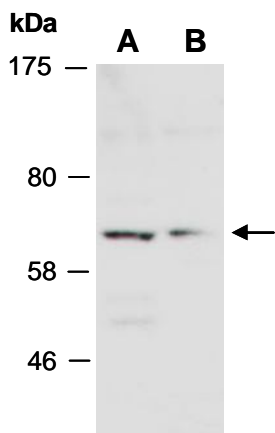
Human

### **Tested Applications:**

WB: 1:1,000-1:3,000 (detect endogenous protein\*)

\*: The apparent protein size on WB may be different from the calculated M.W. due to modifications.

**Product Data:**



**Fig 1.** Western blot of total cell extracts from A) human HeLa, B) human Jurkat; using anti-TRAF3 (N) (R1319-1) at RT for 2 h.