



Order: (888)-282-5810 (Phone)
(818)-707-0392 (Fax)
order@abiocode.com
Web: www.Abiocode.com

TFEB (C) Antibody, Rabbit Polyclonal

Cat#: R1639-2

Quantity: 100 ul

Predicted | Observed M.W.: 53 kDa

Lot#: Refer to vial

Application: WB

Uniprot ID: P19484

Background:

Transcription factor EB (TFEB) is a transcription factor that specifically recognizes and binds E-box sequences (5'-CANNTG-3'). Efficient DNA-binding of TFEB requires dimerization with itself or with another MiT/TFE family member such as TFE3 or MITF. In association with TFE3, TFEB activates the expression of CD40L in T-cells, thereby playing a role in T-cell-dependent antibody responses in activated CD4⁺ T-cells and thymus-dependent humoral immunity. TFEB also acts as a positive regulator of autophagy by promoting the expression of genes involved in autophagy.

Other Names:

Transcription factor EB, Class E basic helix-loop-helix protein 35, bHLHe35, BHLHE35

Source and Purity:

Rabbit polyclonal antibodies were produced by immunizing animals with a GST-fusion protein containing the C-terminal region of human TFEB. Antibodies were purified by affinity purification using immunogen.

Storage Buffer and Condition:

Supplied in 1 x PBS (pH 7.4), 100 ug/ml BSA, 40% Glycerol, 0.01% NaN₃. Store at -20 °C. Stable for 6 months from date of receipt.

Species Specificity:

Human

Tested Applications:

WB: 1:1,000-1:3,000 (detect endogenous protein*)

*: The apparent protein size on WB may be different from the calculated M.W. due to modifications.

Product Data:

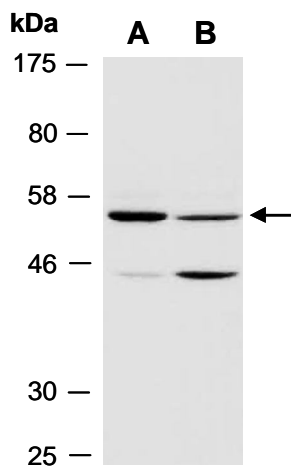


Fig 1. Western blot of total cell extracts from A) human HeLa, B) human Jurkat; using anti-TFEB (C) (R1639-2) at RT for 2 h.