



Order: (888)-282-5810 (Phone)
(818)-707-0392 (Fax)
order@abiocode.com
Web: www.Abiocode.com

IDM1 (C1) Antibody, Rabbit Polyclonal

Cat#: R3104-1

Quantity: 100 ul

Predicted I Observed M.W.: 131 kDa

Lot#: Refer to vial

Application: WB

Uniprot ID: F4IXE7

Background:

IDM1 is a histone H3 acetyltransferase that regulates DNA demethylation in *Arabidopsis*. IDM1 is capable of recognizing methylated DNA through its MBD domain and recognizing unmethylated histone H3K4 through its PHD domain. IDM1 negatively regulates DNA demethylation, preventing DNA hypermethylation of highly homologous multicopy genes and other repetitive sequences [Qian W. et al., *Science* 336, 1445 (2012)].

Other Names:

Histone H3 acetyltransferase IDM1, INCREASED DNA METHYLATION 1, REPRESSOR OF SILENCING 4, ROS4

Source and Purity:

Rabbit polyclonal antibodies were produced by immunizing animals with a GST-fusion protein containing the C-terminal region of *arabidopsis thaliana* IDM1 (At3g14980). Antibodies were purified by affinity purification using immunogen.

Storage Buffer and Condition:

Supplied in 1 x PBS (pH 7.4), 100 ug/ml BSA, 40% Glycerol, 0.01% NaN₃. Store at -20 °C. Stable for 6 months from date of receipt.

Species Specificity:

Arabidopsis thaliana

Tested Applications:

WB: 1:1,000-1:3,000 (detect endogenous protein*)

*: The apparent protein size on WB may be different from the calculated M.W. due to modifications.

Product Data:

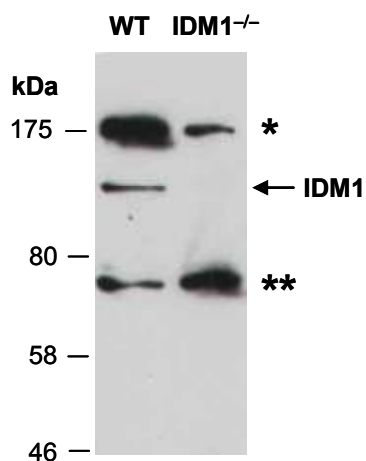


Fig 1. Western blot of equal amounts of protein extracts from WT or IDM1^{-/-} (IDM deficient mutant) *Arabidopsis* tissues using anti-IDM1 (C1) (R3104-1) at RT for 2 h. IDM1 is observed as the predicted 131 kD protein. The 175 kD protein indicated by * is also down-regulated in IDM1^{-/-} sample. The 75 kD band indicated by ** represents a non-specific protein.