



Order: (888)-282-5810 (Phone)
(818)-707-0392 (Fax)
order@abiocode.com
Web: www.Abiocode.com

SEN2 (N1) Antibody, Rabbit Polyclonal

Cat#: R0734-1

Quantity: 100 ul

Predicted | Observed M.W.: 68 kDa

Lot#: Refer to vial

Application: WB

Uniprot ID: Q9HC62

Background:

Sentrin-specific protease 2 (SEN2) belongs to the peptidase C48 family. SEN2 is a protease that catalyzes two essential functions in the SUMO pathway: processing of full-length SUMO1, SUMO2 and SUMO3 to their mature forms and deconjugation of SUMO1, SUMO2 and SUMO3 from targeted proteins. SEN2 may down-regulate CTNNB1 levels and thereby modulate the Wnt pathway.

Other Names:

Sentrin-specific protease 2, Axam2, SMT3-specific isopeptidase 2, Smt3ip2, Sentrin/SUMO-specific protease SEN2, KIAA1331

Source and Purity:

Rabbit polyclonal antibodies were produced by immunizing animals with a GST-fusion protein containing the N-terminal region of human SEN2. Antibodies were purified by affinity purification using immunogen.

Storage Buffer and Condition:

Supplied in 1 x PBS (pH 7.4), 100 ug/ml BSA, 40% Glycerol, 0.01% NaN₃. Store at -20 °C. Stable for 6 months from date of receipt.

Species Specificity:

Human

Tested Applications:

WB: 1:1,000-1:3,000 (detect endogenous protein*)

*: The apparent protein size on WB may be different from the calculated M.W. due to modifications.

Product Data:

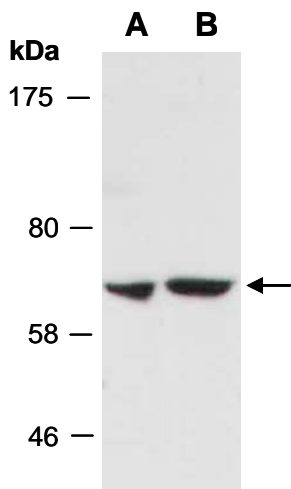


Fig 1. Western blot of total cell extracts from A) human HeLa, B) human Jurkat; using anti-SENP2 (N1) (R0734-1) at RT for 2 h.