



Order: (888)-282-5810 (Phone)  
(818)-707-0392 (Fax)  
[order@abiocode.com](mailto:order@abiocode.com)  
Web: [www.Abiocode.com](http://www.Abiocode.com)

---

## **APOBEC3H (C) Antibody, Rabbit Polyclonal**

**Cat#: R1082-2**

**Quantity: 100 ul**

**Predicted | Observed M.W.: 24 | 27 kDa**

**Lot#: Refer to vial**

**Application: WB**

**Uniprot ID: Q6NTF7**

### **Background:**

DNA dC->dU-editing enzyme APOBEC-3H belongs to the cytidine and deoxycytidylate deaminase family. APOBEC3H is a DNA cytidine deaminase which may provide cellular innate resistance to a specific panel of genetic invaders including endogenous retroelements and a subset of viruses.

### **Other Names:**

DNA dC->dU-editing enzyme APOBEC-3H, APOBEC-related protein 10, ARP-10, Apolipoprotein B mRNA-editing enzyme catalytic polypeptide-like 3H

### **Source and Purity:**

Rabbit polyclonal antibodies were produced by immunizing animals with a GST-fusion protein containing the C-terminal region of human APOBEC3H. Antibodies were purified by affinity purification using immunogen.

### **Storage Buffer and Condition:**

Supplied in 1 x PBS (pH 7.4), 100 ug/ml BSA, 40% Glycerol, 0.01% NaN<sub>3</sub>. Store at -20 °C. Stable for 6 months from date of receipt.

### **Species Specificity:**

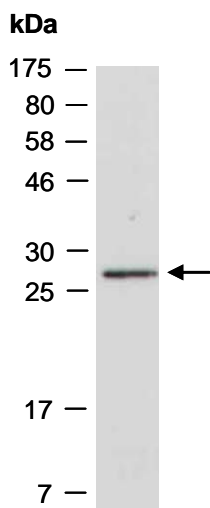
Human

### **Tested Applications:**

WB: 1:1,000-1:3,000 (detect endogenous protein\*)

\*: The apparent protein size on WB may be different from the calculated M.W. due to modifications.

**Product Data:**



**Fig 1.** Western blot of total cell extracts from human HeLa; using anti-APOBEC3H (C) (R1082-2) at RT for 2 h.