



Order: (888)-282-5810 (Phone)
(818)-707-0392 (Fax)
order@abiocode.com
Web: www.Abiocode.com

EWSR1 (vPair™) Antibodies

Cat#: R2535-vp

Lot#: Refer to vial

Predicted I Observed M.W.: 68 I 75, 85 kDa

Uniprot ID: Q01844

Application: WB

Quantity: 50 ul EWSR1 (N) (R2535-1) Rabbit Polyclonal Antibody &
50 ul EWSR1 (C) (R2535-2) Rabbit Polyclonal Antibody

Product Introduction:

vPair™ antibodies represent a pair of fully characterized antibodies that recognize two different regions of a target protein. The product is developed by Abiocode to address whether the signal observed truly represents the protein of interest, an often encountered issue in antibody-based assays. The use of a pair of fully characterized vPair™ antibodies in the same assay can validate signal specificity since vPair™ antibodies recognize two independent epitopes of the same protein. Different sets of vPair™ antibodies are developed at Abiocode to work with specific applications, including antibody arrays, Western blot, IP-Western, ChIP, IHC, and FACS.

Background:

Ewing sarcoma breakpoint region 1 protein (EWSR1) is a multifunctional protein involved in various cellular processes, including gene expression, cell signaling and RNA processing and transport. EWSR1 contains a N-terminal transcriptional activation domain and a C-terminal RNA-binding domain. Chromosomal translocations between the EWSR1 gene and various genes encoding transcription factors result in the production of chimeric proteins that are involved in tumorigenesis. These chimeric proteins usually consist of the N-terminal transcriptional activation domain of EWSR1 fused to the C-terminal DNA-binding domain of the transcription factor. Mutations in this gene, specifically a t(11;22)(q24;q12) translocation, are known to cause Ewing sarcoma as well as neuroectodermal and various other tumors. Alternative splicing of this gene results in multiple transcript variants [provided by RefSeq].

Other Names:

RNA-binding protein EWS, EWS oncogene, Ewing sarcoma breakpoint region 1 protein

Source and Purity:

Rabbit polyclonal antibodies were produced by immunizing animals with GST-fusion proteins containing either the N-terminal [EWSR1 (N) (R2535-1)] or the C-terminal [EWSR1 (C) (R2535-2)] region of human EWSR1. Antibodies were purified by affinity purification using immunogen.

Storage Buffer and Condition:

Supplied in 1 x PBS (pH 7.4), 100 ug/ml BSA, 40% Glycerol, 0.01% NaN₃. Store at -20 °C. Stable for 6 months from date of receipt.

Species Specificity:

Human, Mouse

Tested Applications:

WB: 1:1,000-1:3,000 (detect endogenous protein*)

*: The apparent protein size on WB may be different from the calculated M.W. due to modifications.

Product Data:

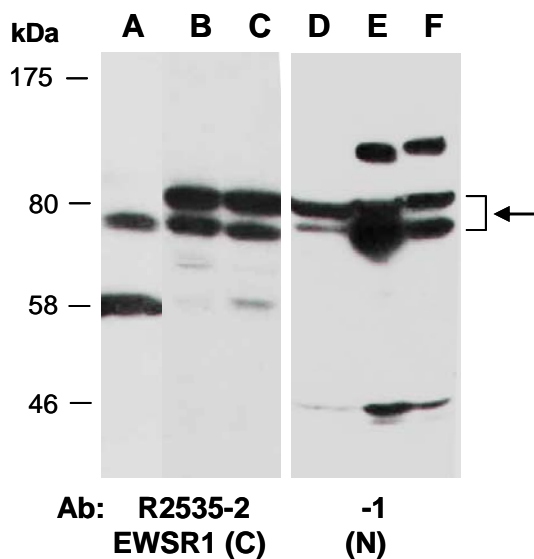


Fig 1. Western blot of total cell extracts from A) mouse brain, B, E) human HeLa, C, F) human Jurkat, D) mouse thymus; using 2 independent Abs against 2 distinct regions of human EWSR1 at RT for 2 h.