



Order: (888)-282-5810 (Phone)  
(818)-707-0392 (Fax)  
[order@abiocode.com](mailto:order@abiocode.com)  
Web: [www.Abiocode.com](http://www.Abiocode.com)

---

## **GPC3 (C) Antibody, Rabbit Polyclonal**

**Cat#: R2550-2**

**Quantity: 100 ul**

**Predicted | Observed M.W.: 65 | 59, 66, 85 kDa**

**Lot#: Refer to vial**

**Application: WB**

**Uniprot ID: Q9NQ94**

### **Background:**

GPC3 is a cell surface proteoglycan that bears heparan sulfate. GPC3 inhibits the dipeptidyl peptidase activity of DPP4. GPC3 may be involved in the suppression/modulation of growth in the predominantly mesodermal tissues and organs. GPC3 may play a role in the modulation of IGF2 interactions with its receptor and thereby modulate its function. GPC3 may regulate growth and tumor predisposition.

### **Other Names:**

Glypican-3, GTR2-2, Intestinal protein, OCI-5MXR7, Cleaved into secreted glypican-3, OCI5, DGSX, SDYS, SGB, SGBS, SGBS1

### **Source and Purity:**

Rabbit polyclonal antibodies were produced by immunizing animals with a GST-fusion protein containing C-terminal region of human GPC3. Antibodies were purified by affinity purification using immunogen.

### **Storage Buffer and Condition:**

Supplied in 1 x PBS (pH 7.4), 100 ug/ml BSA, 40% Glycerol, 0.01% NaN<sub>3</sub>. Store at -20 °C. Stable for 6 months from date of receipt.

### **Species Specificity:**

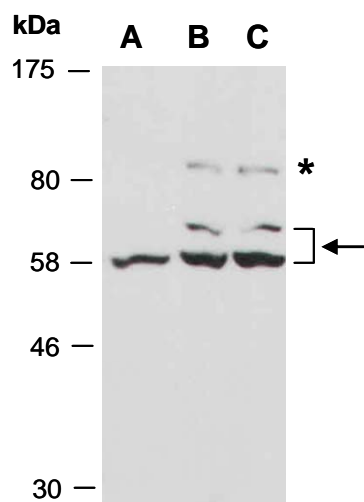
Human, Mouse

### **Tested Applications:**

WB: 1:1,000-1:3,000 (detect endogenous protein\*)

\*: The apparent protein size on WB may be different from the calculated M.W. due to modifications.

**Product Data:**



**Fig 1.** Western blot of total cell extracts from A) mouse thymus, B) human HeLa, C) human Jurkat; using anti-GPC3 (C) (R2550-2) at RT for 2 h. This Ab recognizes the 59 kD and 66 kD isoforms of GPC3. The 85 kD form indicated by \* may represent glycanated GPC3 (Capurro M. et al., JCS 125:3380).